


Listening Learning Leading



N

Abbey House, Abbey Close,
Abingdon, OX14 3JE

Client:

South Oxfordshire District Council

Contract:

Parking Order 2024

Title:

Castle Street Car Park
Wallingford

Scale:

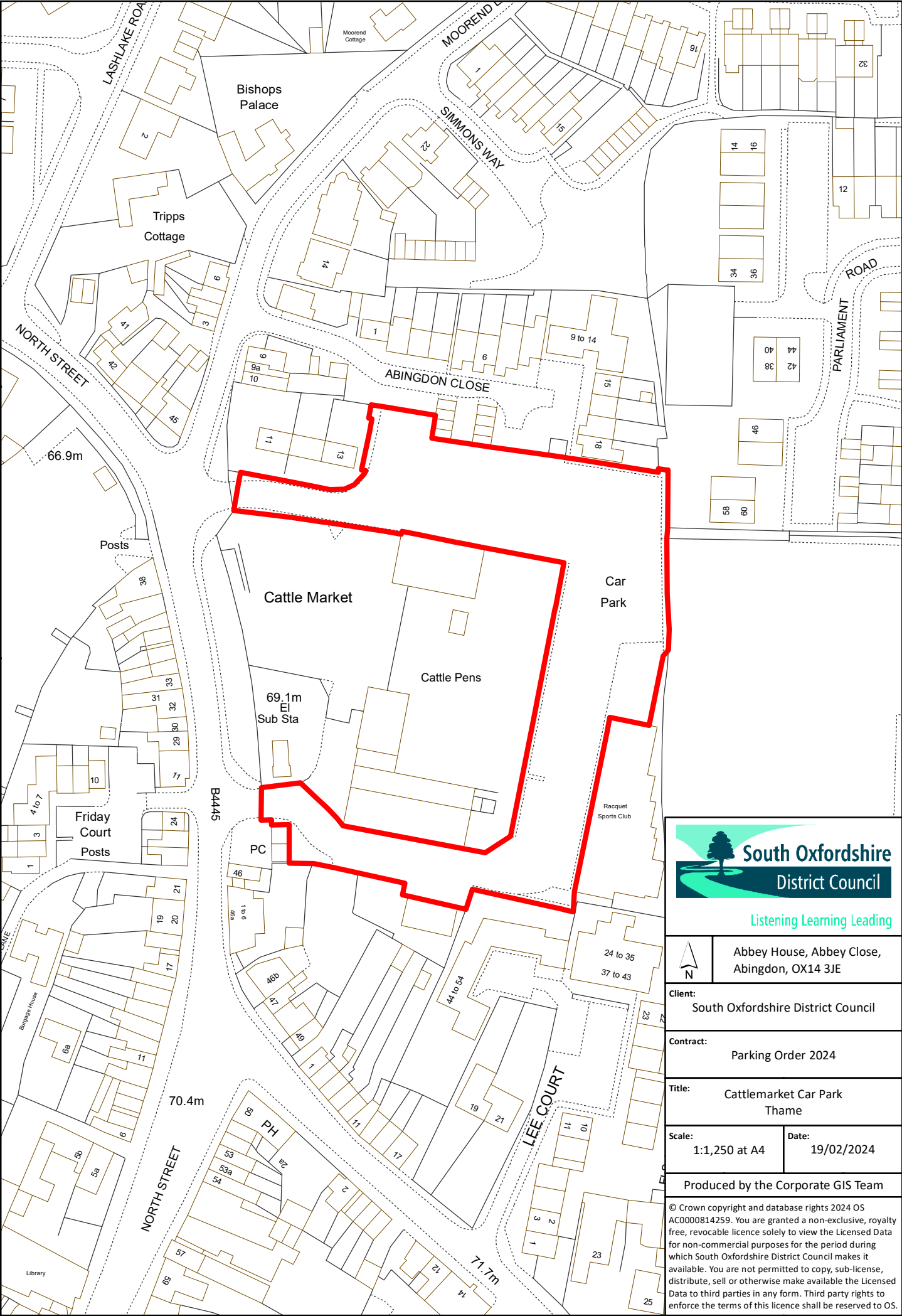
1:1,250 at A4

Date:

19/02/2024

Produced by the Corporate GIS Team

© Crown copyright and database rights 2024 OS
AC0000814259. You are granted a non-exclusive, royalty
free, revocable licence solely to view the Licensed Data
for non-commercial purposes for the period during
which South Oxfordshire District Council makes it
available. You are not permitted to copy, sub-license,
distribute, sell or otherwise make available the Licensed
Data to third parties in any form. Third party rights to
enforce the terms of this licence shall be reserved to OS.



Listening Learning Leading



Abbey House, Abbey Close,
Abingdon, OX14 3JE

Client:
South Oxfordshire District Council

Contract:
Parking Order 2024

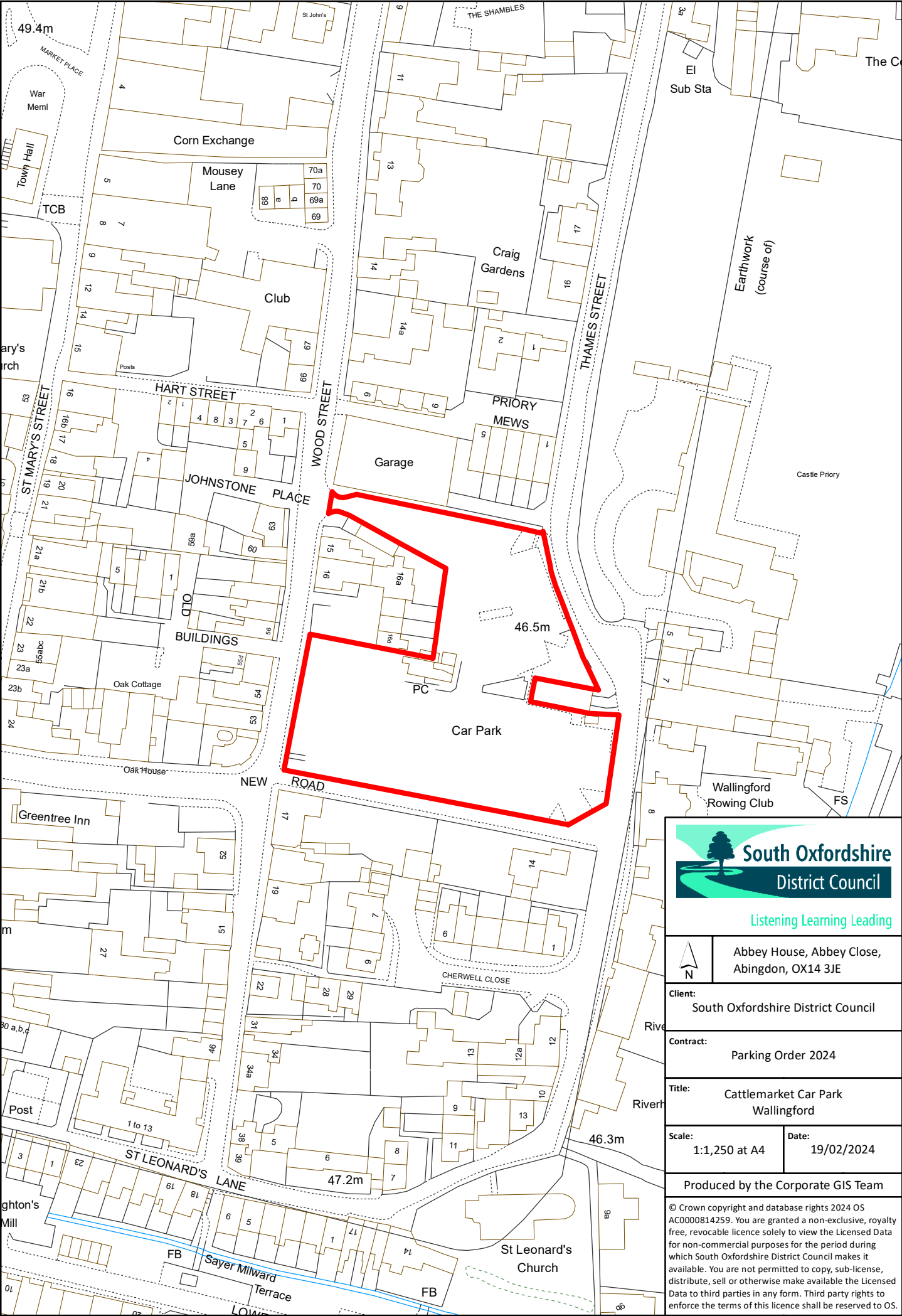
Title:
Cattlemarket Car Park
Thame

Scale:
1:1,250 at A4

Date:
19/02/2024

Produced by the Corporate GIS Team

© Crown copyright and database rights 2024 OS
AC0000814259. You are granted a non-exclusive, royalty
free, revocable licence solely to view the Licensed Data
for non-commercial purposes for the period during
which South Oxfordshire District Council makes it
available. You are not permitted to copy, sub-license,
distribute, sell or otherwise make available the Licensed
Data to third parties in any form. Third party rights to
enforce the terms of this licence shall be reserved to OS.



Listening Learning Leading

Abbey House, Abbey Close,
Abingdon, OX14 3JE

Client:

South Oxfordshire District Council

Contract:

Parking Order 2024

Title:

Cattlemarket Car Park
Wallingford

Scale:

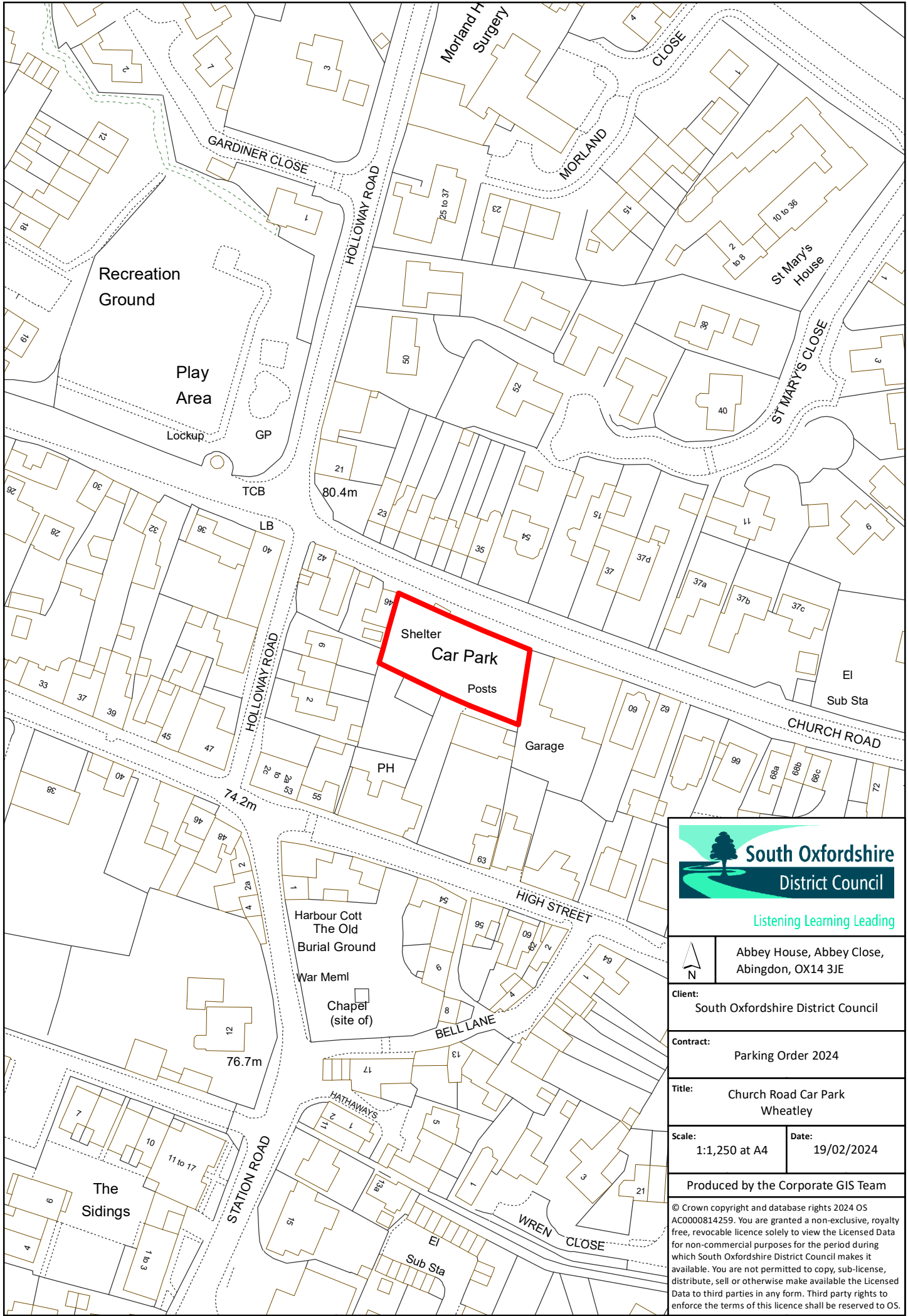
1:1,250 at A4


Date:

19/02/2024

Produced by the Corporate GIS Team


© Crown copyright and database rights 2024 OS
AC0000814259. You are granted a non-exclusive, royalty
free, revocable licence solely to view the Licensed Data
for non-commercial purposes for the period during
which South Oxfordshire District Council makes it
available. You are not permitted to copy, sub-license,
distribute, sell or otherwise make available the Licensed
Data to third parties in any form. Third party rights to
enforce the terms of this licence shall be reserved to OS.





South Oxfordshire
District Council

Listening Learning Leading



Abbey House, Abbey Close,
Abingdon, OX14 3JE

Client:

South Oxfordshire District Council

Contract:

Parking Order 2024

Title:

Church Road Car Park
Wheatley

Scale:

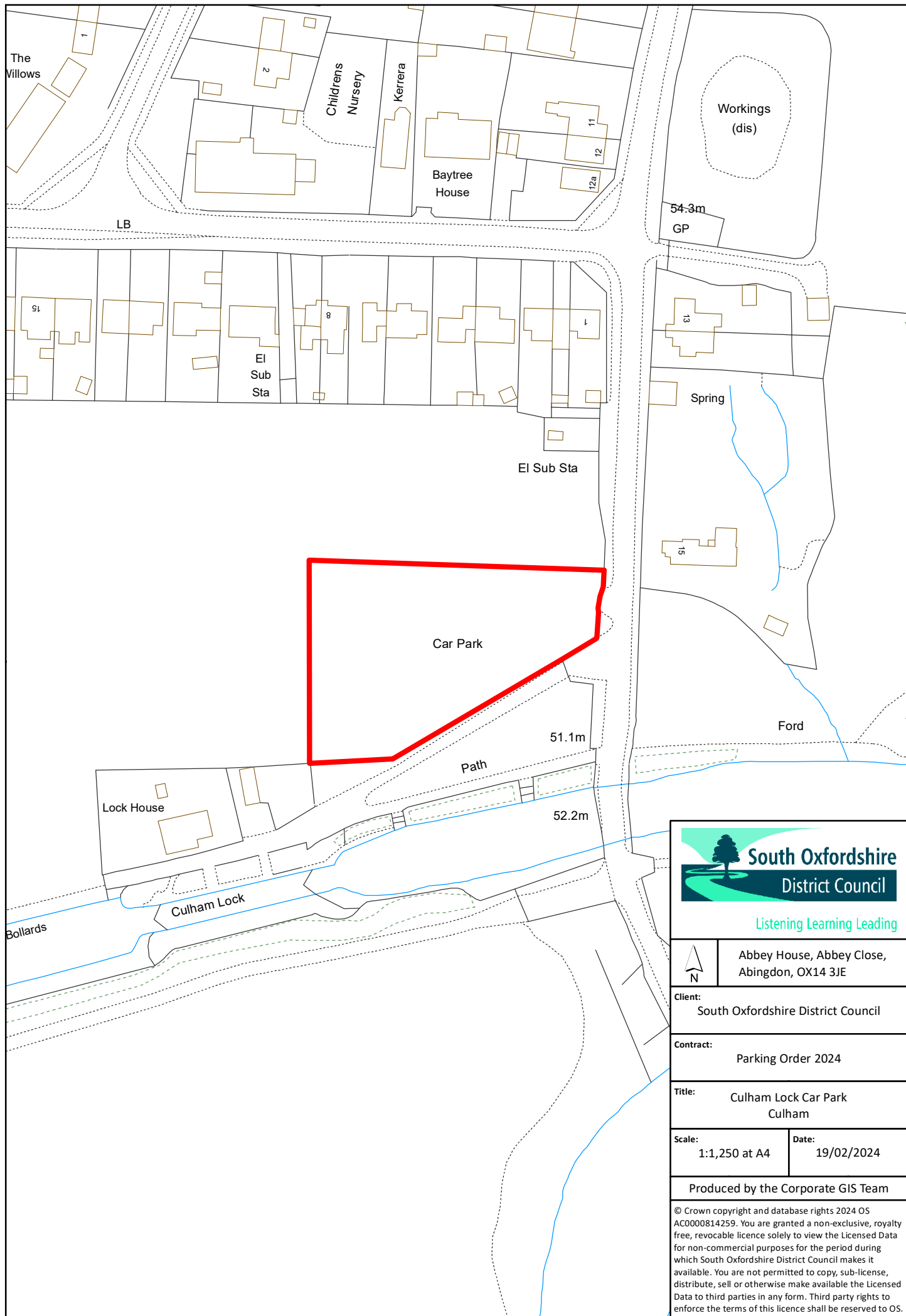
1:1,250 at A4


Date:

19/02/2024

Produced by the Corporate GIS Team


© Crown copyright and database rights 2024 OS
AC0000814259. You are granted a non-exclusive, royalty
free, revocable licence solely to view the Licensed Data
for non-commercial purposes for the period during
which South Oxfordshire District Council makes it
available. You are not permitted to copy, sub-license,
distribute, sell or otherwise make available the Licensed
Data to third parties in any form. Third party rights to
enforce the terms of this licence shall be reserved to OS.





South Oxfordshire
District Council

Listening Learning Leading



Abbey House, Abbey Close,
Abingdon, OX14 3JE

Client:

South Oxfordshire District Council

Contract:

Parking Order 2024

Title:

Culham Lock Car Park
Culham

Scale:

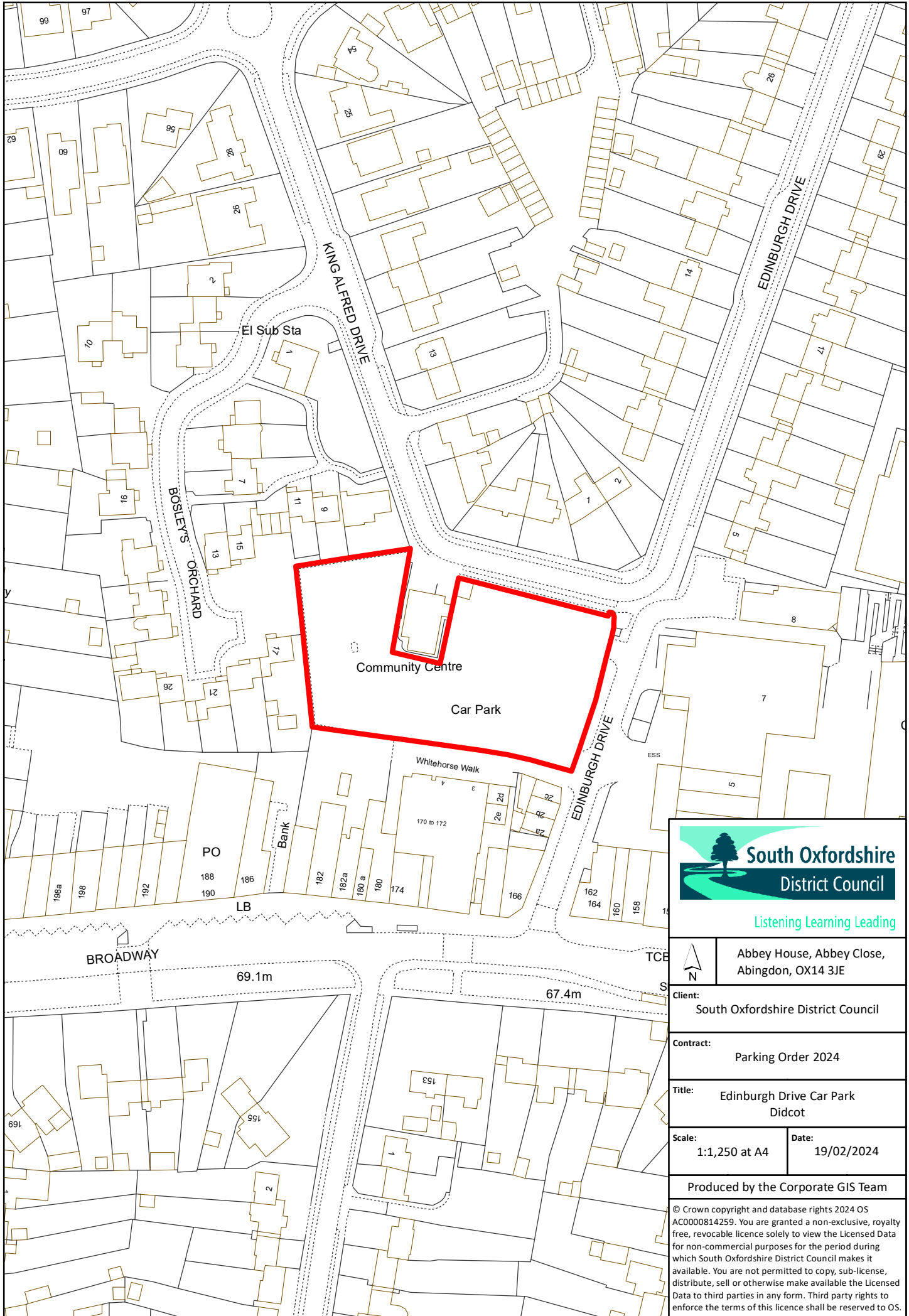
1:1,250 at A4


Date:

19/02/2024

Produced by the Corporate GIS Team


© Crown copyright and database rights 2024 OS
AC0000814259. You are granted a non-exclusive, royalty
free, revocable licence solely to view the Licensed Data
for non-commercial purposes for the period during
which South Oxfordshire District Council makes it
available. You are not permitted to copy, sub-license,
distribute, sell or otherwise make available the Licensed
Data to third parties in any form. Third party rights to
enforce the terms of this licence shall be reserved to OS.





South Oxfordshire
District Council

Listening Learning Leading



Abbey House, Abbey Close,
Abingdon, OX14 3JE

Client:

South Oxfordshire District Council

Contract:

Parking Order 2024

Title:

Edinburgh Drive Car Park
Didcot

Scale:

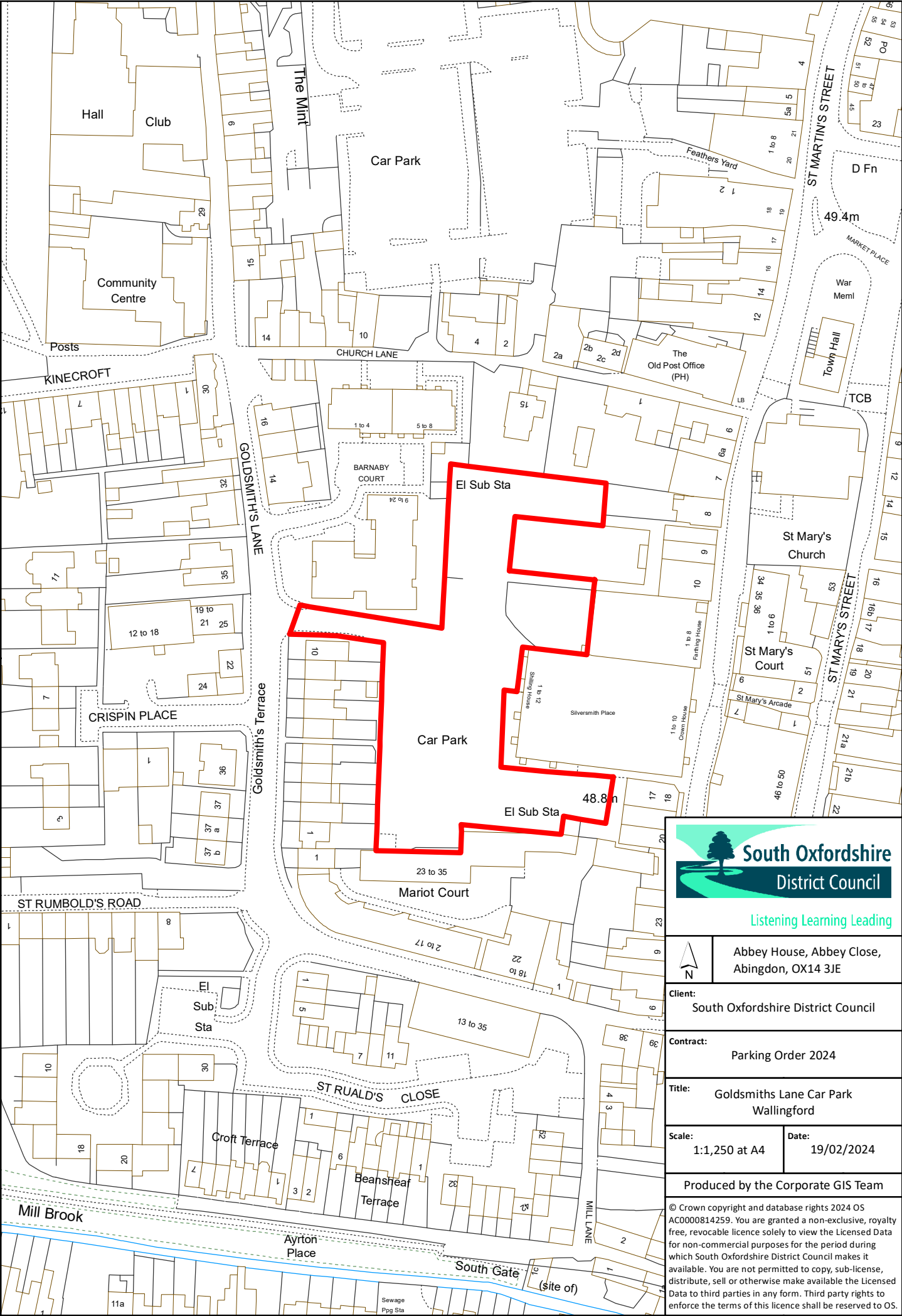
1:1,250 at A4

Date:

19/02/2024

Produced by the Corporate GIS Team

© Crown copyright and database rights 2024 OS
AC0000814259. You are granted a non-exclusive, royalty
free, revocable licence solely to view the Licensed Data
for non-commercial purposes for the period during
which South Oxfordshire District Council makes it
available. You are not permitted to copy, sub-license,
distribute, sell or otherwise make available the Licensed
Data to third parties in any form. Third party rights to
enforce the terms of this licence shall be reserved to OS.



Listening Learning Leading



Abbey House, Abbey Close,
Abingdon, OX14 3JE

Client:
South Oxfordshire District Council

Contract:
Parking Order 2024

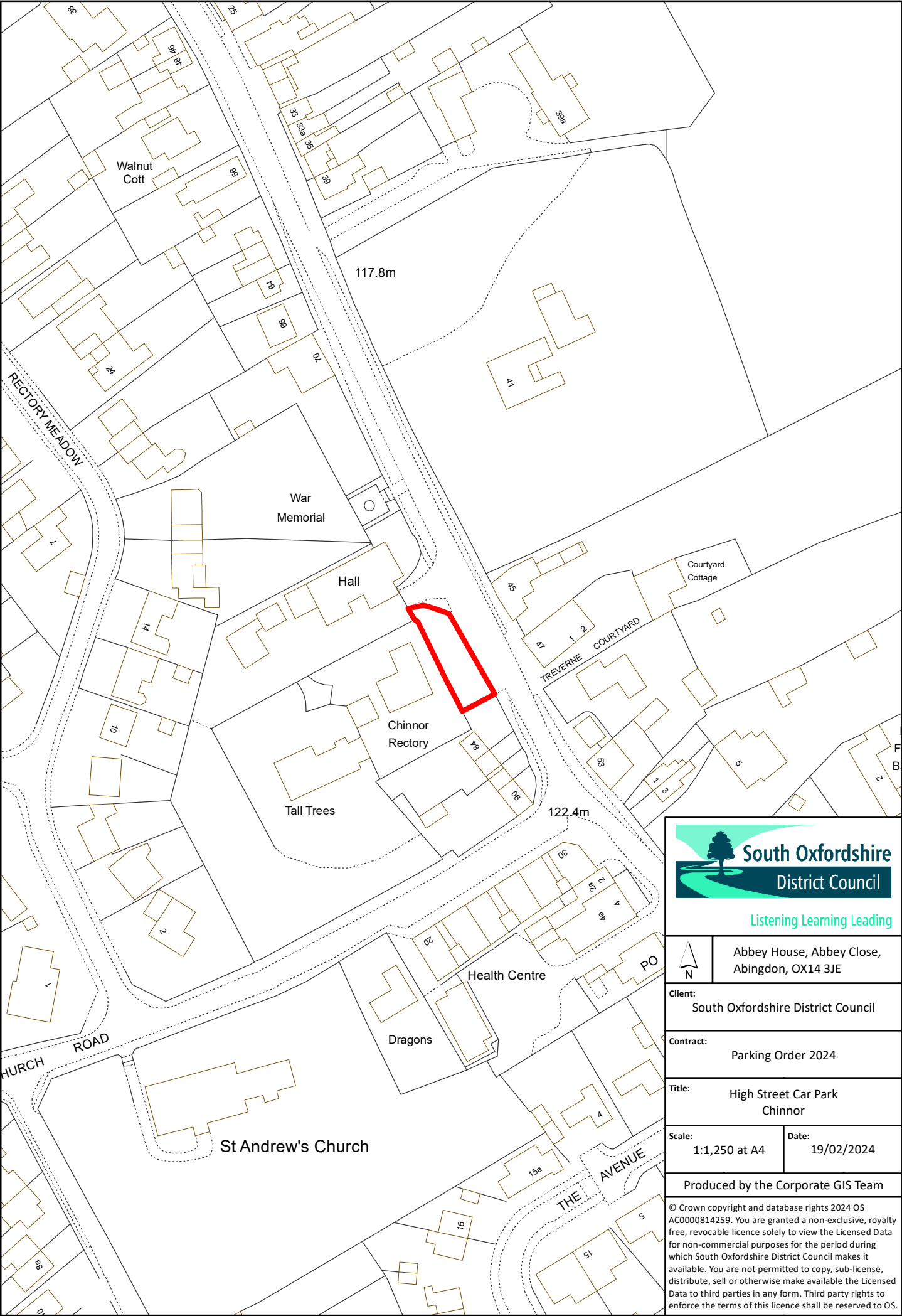
Title:
Goldsmiths Lane Car Park
Wallingford

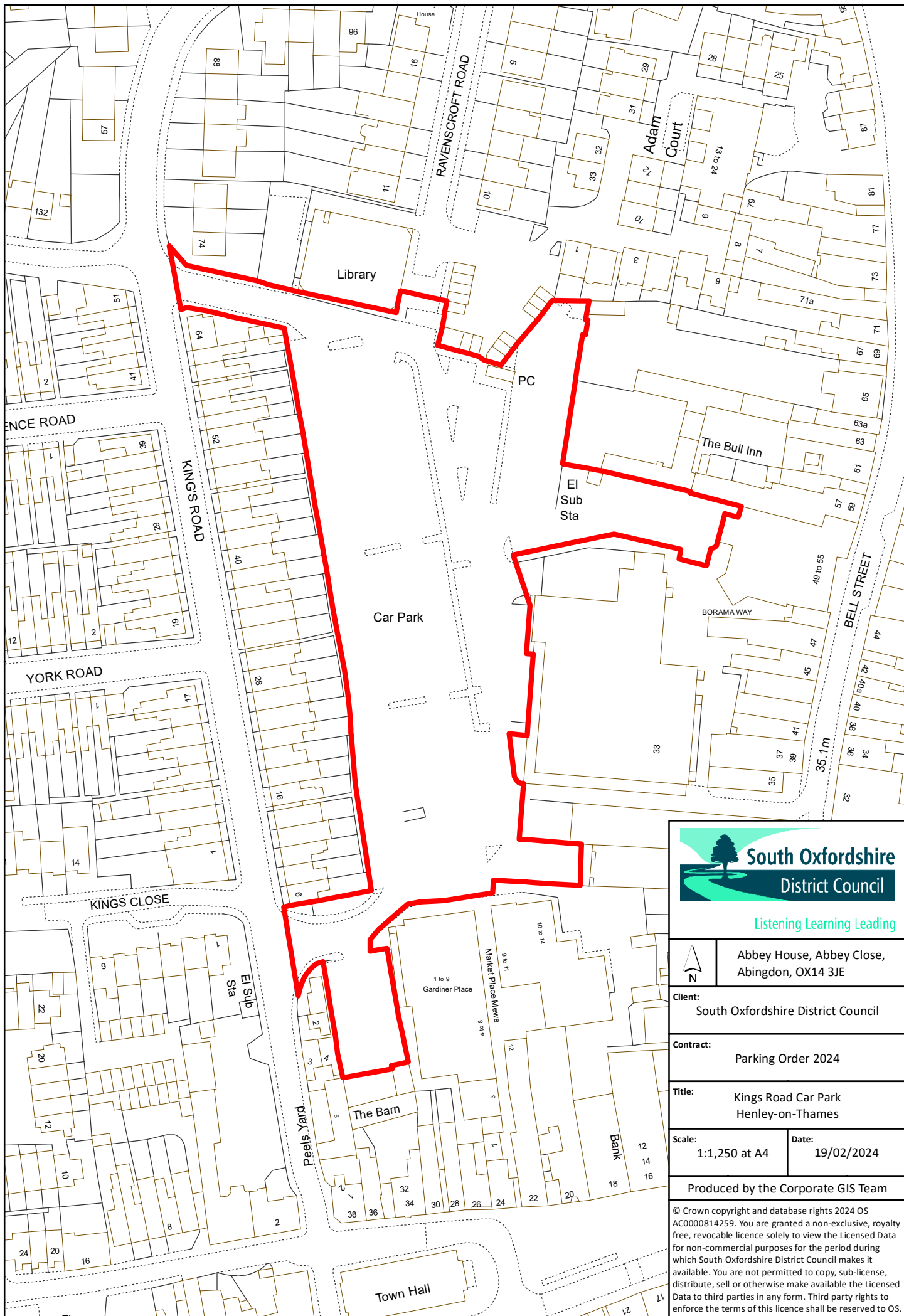
Scale:
1:1,250 at A4

Date:
19/02/2024

Produced by the Corporate GIS Team

© Crown copyright and database rights 2024 OS
AC0000814259. You are granted a non-exclusive, royalty
free, revocable licence solely to view the Licensed Data
for non-commercial purposes for the period during
which South Oxfordshire District Council makes it
available. You are not permitted to copy, sub-license,
distribute, sell or otherwise make available the Licensed
Data to third parties in any form. Third party rights to
enforce the terms of this licence shall be reserved to OS.





Listening Learning Leading



Abbey House, Abbey Close,
Abingdon, OX14 3JE

Client:
South Oxfordshire District Council

Contract:
Parking Order 2024

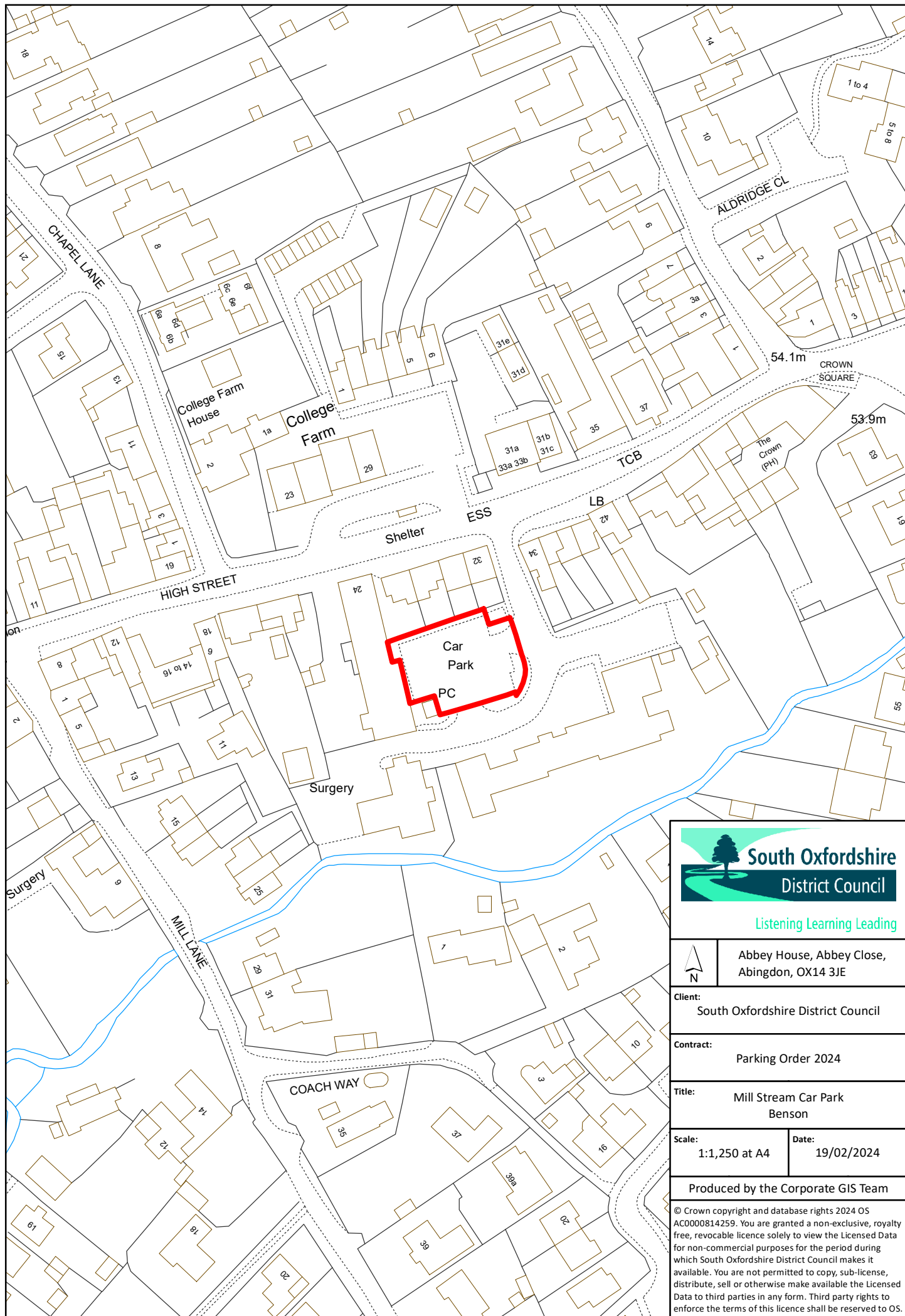
Title:
Kings Road Car Park
Henley-on-Thames


Scale:
1:1,250 at A4

Date:
19/02/2024


Produced by the Corporate GIS Team

© Crown copyright and database rights 2024 OS
AC0000814259. You are granted a non-exclusive, royalty
free, revocable licence solely to view the Licensed Data
for non-commercial purposes for the period during
which South Oxfordshire District Council makes it
available. You are not permitted to copy, sub-license,
distribute, sell or otherwise make available the Licensed
Data to third parties in any form. Third party rights to
enforce the terms of this licence shall be reserved to OS.





Listening Learning Leading



N

Abbey House, Abbey Close,
Abingdon, OX14 3JE

Client:
South Oxfordshire District Council

Contract:
Parking Order 2024

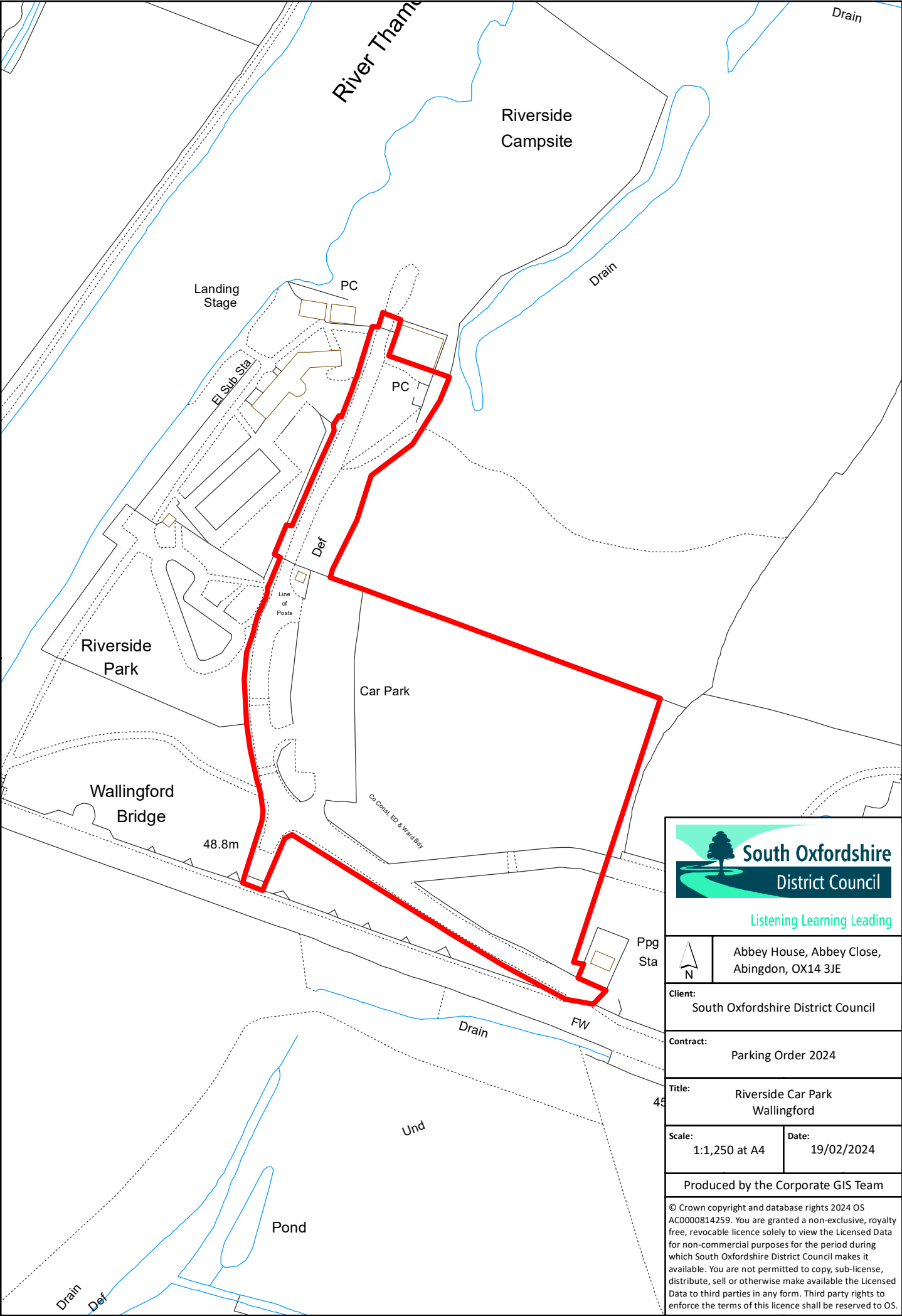
Title:
Mill Stream Car Park
Benson

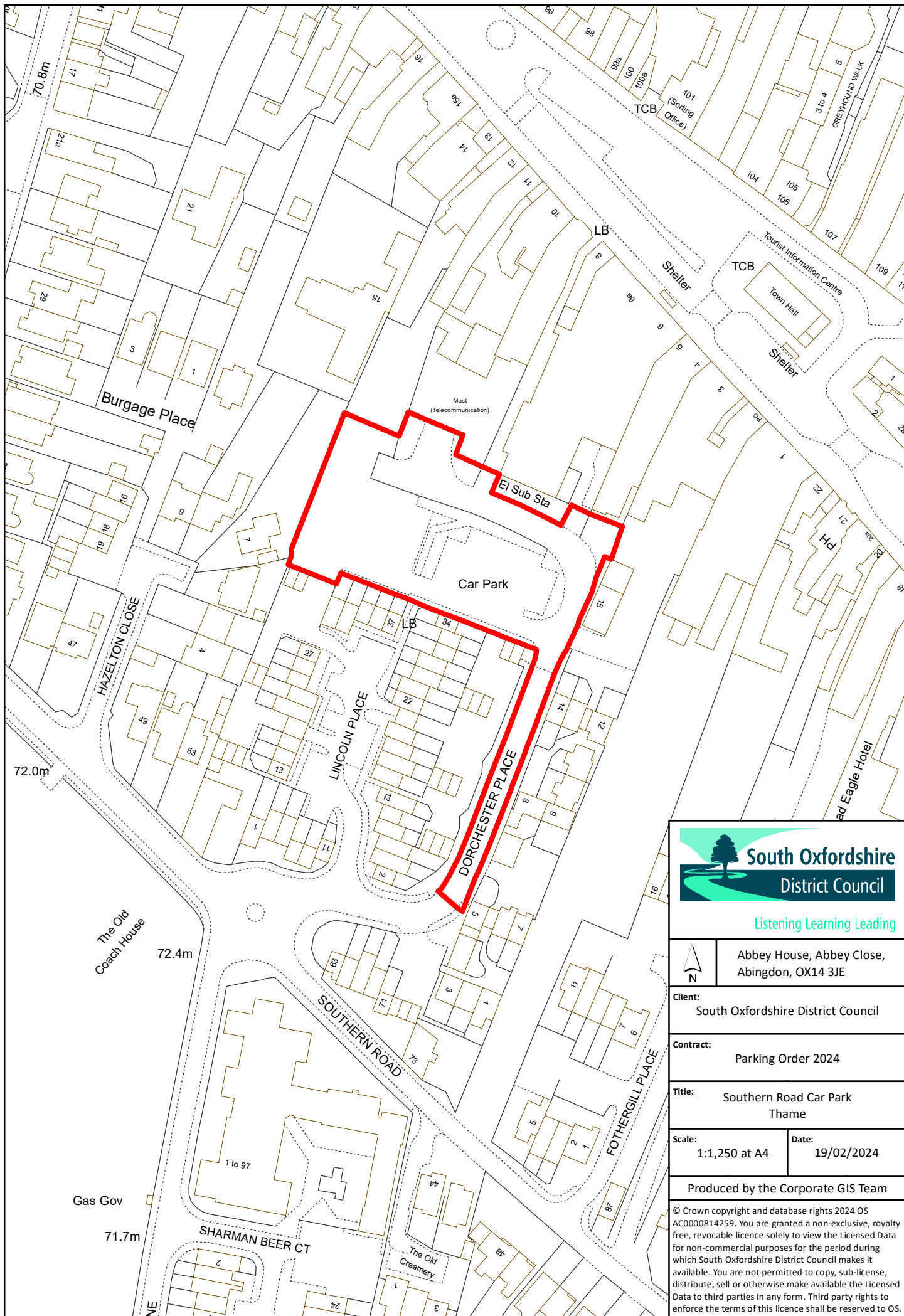
Scale:
1:1,250 at A4


Date:
19/02/2024

Produced by the Corporate GIS Team

© Crown copyright and database rights 2024 OS
AC0000814259. You are granted a non-exclusive, royalty
free, revocable licence solely to view the Licensed Data
for non-commercial purposes for the period during
which South Oxfordshire District Council makes it
available. You are not permitted to copy, sub-license,
distribute, sell or otherwise make available the Licensed
Data to third parties in any form. Third party rights to
enforce the terms of this licence shall be reserved to OS.








South Oxfordshire
District Council

Listening Learning Leading



N

Abbey House, Abbey Close,
Abingdon, OX14 3JE

Client:

South Oxfordshire District Council

Contract:

Parking Order 2024

Title:

Southern Road Car Park
Thame

Scale:

1:1,250 at A4


Date:

19/02/2024

Produced by the Corporate GIS Team


© Crown copyright and database rights 2024 OS
AC0000814259. You are granted a non-exclusive, royalty
free, revocable licence solely to view the Licensed Data
for non-commercial purposes for the period during
which South Oxfordshire District Council makes it
available. You are not permitted to copy, sub-license,
distribute, sell or otherwise make available the Licensed
Data to third parties in any form. Third party rights to
enforce the terms of this licence shall be reserved to OS.





South Oxfordshire
District Council

Listening Learning Leading



Abbey House, Abbey Close,
Abingdon, OX14 3JE

Client:

South Oxfordshire District Council

Contract:

Parking Order 2024

Title:

Southfields Car Park
Henley-on-Thames

Scale:

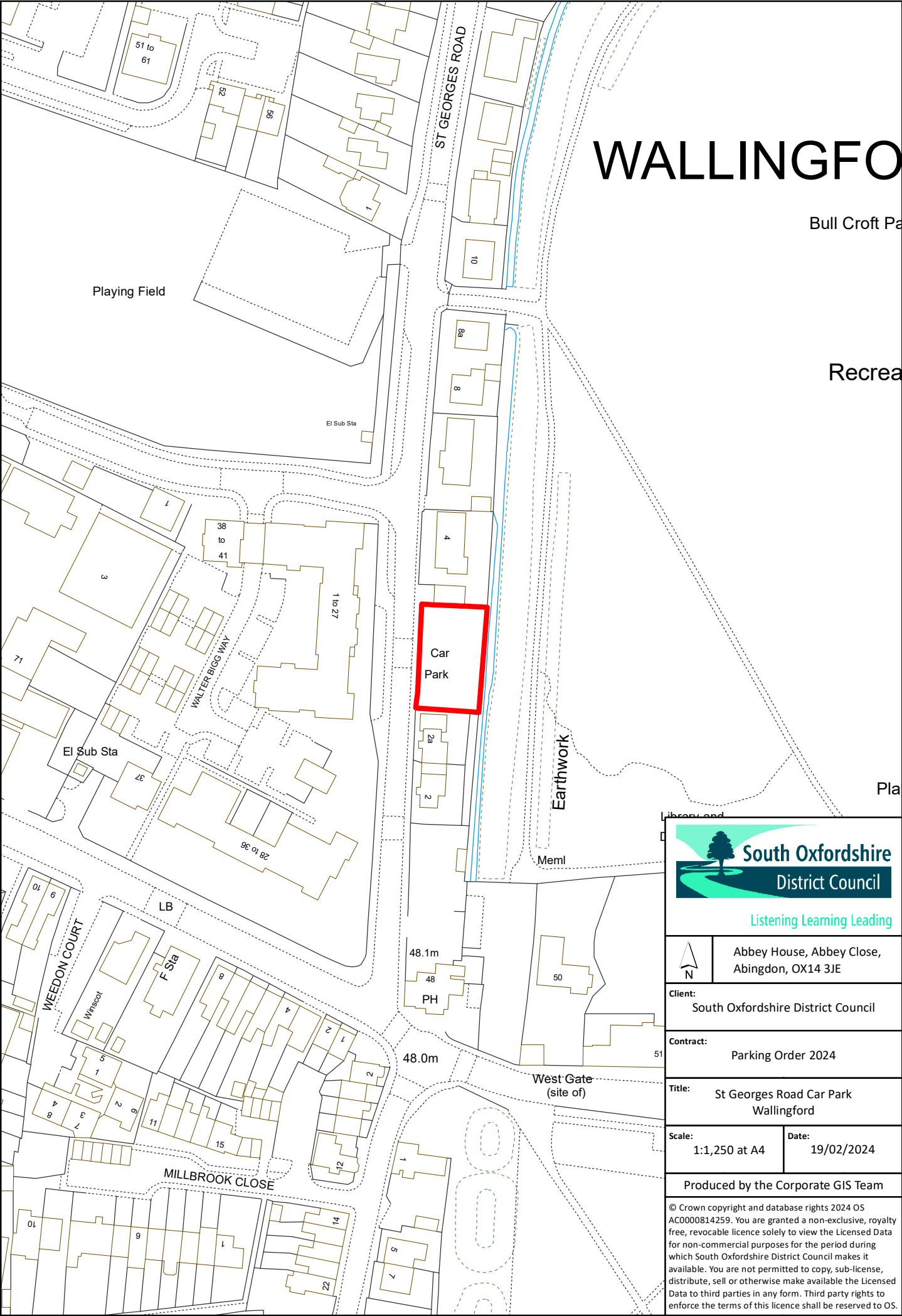
1:1,250 at A4

Date:

19/02/2024

Produced by the Corporate GIS Team

© Crown copyright and database rights 2024 OS
AC0000814259. You are granted a non-exclusive, royalty
free, revocable licence solely to view the Licensed Data
for non-commercial purposes for the period during
which South Oxfordshire District Council makes it
available. You are not permitted to copy, sub-license,
distribute, sell or otherwise make available the Licensed
Data to third parties in any form. Third party rights to
enforce the terms of this licence shall be reserved to OS.



WALLINGFORD

Bull Croft Pa

Recrea

Pla



Listening Learning Leading



Abbey House, Abbey Close,
Abingdon, OX14 3JE

Client:
South Oxfordshire District Council

Contract:
Parking Order 2024

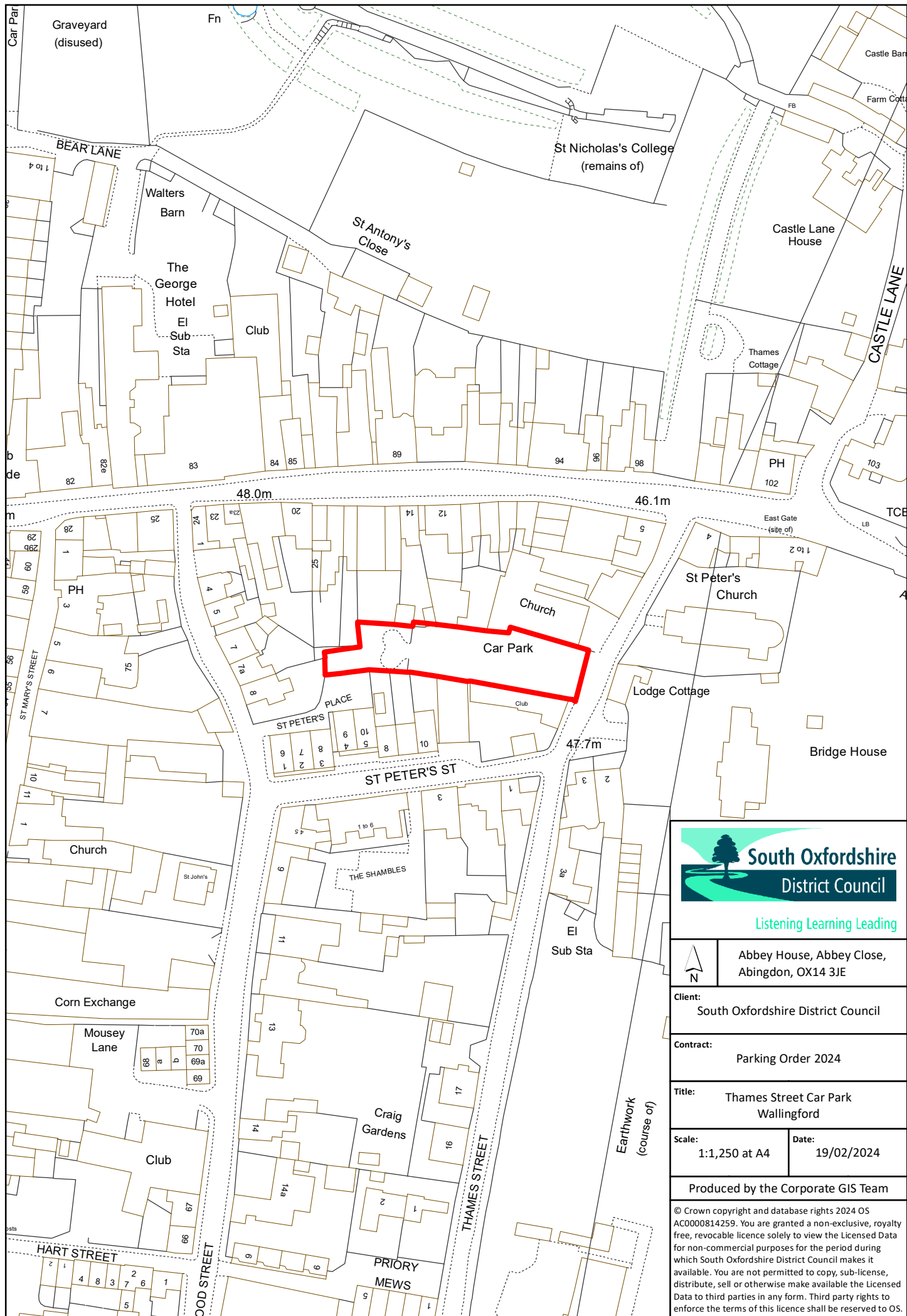
Title:
St Georges Road Car Park
Wallingford


Scale:
1:1,250 at A4

Date:
19/02/2024


Produced by the Corporate GIS Team

© Crown copyright and database rights 2024 OS
AC0000814259. You are granted a non-exclusive, royalty
free, revocable licence solely to view the Licensed Data
for non-commercial purposes for the period during
which South Oxfordshire District Council makes it
available. You are not permitted to copy, sub-license,
distribute, sell or otherwise make available the Licensed
Data to third parties in any form. Third party rights to
enforce the terms of this licence shall be reserved to OS.





Listening Learning Leading



N

Abbey House, Abbey Close,
Abingdon, OX14 3JE

Client:

South Oxfordshire District Council

Contract:

Parking Order 2024

Title:

Thames Street Car Park
Wallingford

Scale:

1:1,250 at A4

Date:

19/02/2024

Produced by the Corporate GIS Team

© Crown copyright and database rights 2024 OS
AC0000814259. You are granted a non-exclusive, royalty
free, revocable licence solely to view the Licensed Data
for non-commercial purposes for the period during
which South Oxfordshire District Council makes it
available. You are not permitted to copy, sub-license,
distribute, sell or otherwise make available the Licensed
Data to third parties in any form. Third party rights to
enforce the terms of this licence shall be reserved to OS.



Listening Learning Leading



Abbey House, Abbey Close,
Abingdon, OX14 3JE

Client:
South Oxfordshire District Council

Contract:
Parking Order 2024

Title:
Wheel Orchard Car Park
Goring

Scale: 1:1,250 at A4	Date: 19/02/2024
-------------------------	---------------------

Produced by the Corporate GIS Team

© Crown copyright and database rights 2024 OS
AC0000814259. You are granted a non-exclusive, royalty
free, revocable licence solely to view the Licensed Data
for non-commercial purposes for the period during
which South Oxfordshire District Council makes it
available. You are not permitted to copy, sub-license,
distribute, sell or otherwise make available the Licensed
Data to third parties in any form. Third party rights to
enforce the terms of this licence shall be reserved to OS.