

What happens to your waste after we empty the bins?



South Oxfordshire and Vale of White Horse districts are consistently in the top ten recycling areas in the country and we hope you can help keep us up there. Your mixed recycling is taken to a material recovery facility where it is separated and sent on for reprocessing.



Non-recycling refuse (rubbish) goes to an energy recovery facility where it is used to generate electricity. This means 95 per cent of South Oxfordshire and Vale of White Horse's general refuse no longer goes to landfill.



Your leftover and out of date food is taken away to a food recycling facility where it is added to heated tanks. Much of it is turned into fertiliser which is used on farmland across Oxfordshire.

To find out more about what happens to your waste see our website www.morerecycling.co.uk

What else can be recycled locally?

At this time we are unable to collect textiles, batteries and small electricals when we empty your bins. They are all accepted at the county's household waste recycling centres. Many supermarkets collect used household batteries and there are many charity donation banks available for clothes and textiles.



To find out more about the council's waste collection policy please visit our website www.morerecycling.co.uk

We can collect bulky items such as furniture and utilities. To book a bulky waste collection please visit our website. For more information on reusing furniture take a look at the reduce and reuse page in this leaflet.

Need this leaflet in another format or language?
Please call or email us, using the details below.

Contact Details

Recycling, food waste and bins queries please call Biffa on **03000 610610** or email waste.team@southandvale.gov.uk Or contact the council by calling **01235 422422** www.morerecycling.co.uk



This leaflet was printed by carbon colour using FSC® certified recycled paper.

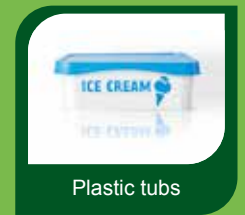
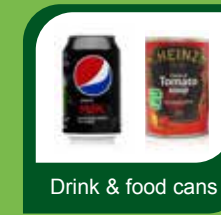
Flats

What goes in which bin?



Recycling bin
What goes in it?

Collected every other week



Recycling needs to be clean, dry and loose.
No black bags!

No food waste, no nappies!



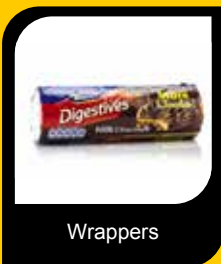


Rubbish bin What goes in it?

Collected every other week



Clingfilm



Wrappers



Nappies



Toys



Kitchen towels
& tissues



Polystyrene



Black bags



Pouches



Wooden products



Biodegradable
products

Soft plastics like
wrappers and film
can be taken to
supermarkets to
be recycled

**Please remember we will only
take waste that fits inside the
bin with the lid closed, no
extra bags will be collected.**

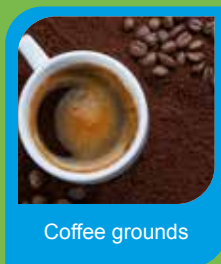


Food waste bin What goes in it?

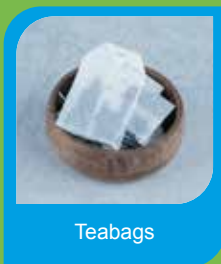
Collected every week



Eggshells & bones



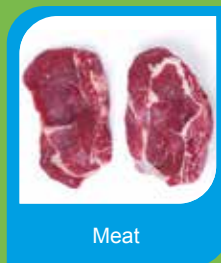
Coffee grounds



Teabags



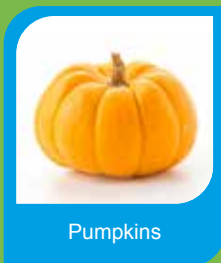
Cooking oil, fats
& lards



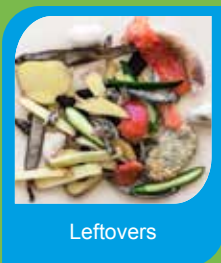
Meat



Mouldy food



Pumpkins



Leftovers

**If you choose to line your indoor
caddy you can use compostable
liners or newspaper.**

Did you know that recycling six
teabags makes enough electricity
to make another cup of tea.
(Source: WRAP)

On average, up to 33% of the waste we collect from rubbish bins is food waste that could be recycled. If food waste is put in the small green food bin it is transformed into energy and fertiliser and also gives you more space in your rubbish bin.

Reduce and reuse

Remember to try and reduce and reuse wherever possible, it's even more important than recycling! For more information on how to reduce and reuse visit our website. What you can do to reduce your waste and increase your reuse:

- Take a shopping bag
- Buy your fruit and veg without packaging
- Buy pre-owned items and 'move on' items from your house to someone else's
- Use refillable water bottles when out and about
- Follow the website 'Love Food Hate Waste' for more ideas on how to reduce your food waste.
- Take unwanted food to a local community fridge.
- Take broken electrical items, clothes and furniture to a repair cafe instead of throwing them away.

The following local charities specialise in furniture recycling:

Helen and Douglas House 01491 412689

Sue Ryder 03330 031883

Emmaus 01865 763698

Kathryn Turner Trust 01235 527310

To find local community fridges, repair cafes and other community action groups visit www.cagoxfordshire.org.uk

