



Didcot Garden Town

- **Overview**
 - What is a Garden Town?
 - DGT Delivery Plan
 - Advisory Board
 - Sounding Boards
- **Current Work**
 - Communications
 - Governance
 - Projects
- **Looking Ahead**

Press release

New garden towns to create thousands of new homes

Two new garden towns are being supported with £1.1 million of new funding that will help deliver thousands of homes for aspiring homeowners.

Published 7 December 2015

From: [Ministry of Housing, Communities & Local Government](#)



Housing Minister Brandon Lewis with homeowner Chris and Sovereign Housing Association's Housing and Communities Director Heather Bowman.

Didcot in Oxfordshire and North Essex will be home to new communities that between them are set to provide up to 50,000 new homes, supported by new infrastructure.

Didcot Garden Town

Garden Communities: A complete and wholesome place to live

- ❑ Clear identity
- ❑ Sustainable scale
- ❑ Well designed places
- ❑ Great homes
- ❑ Strong local vision + engagement
- ❑ Integrated transport
- ❑ Healthy Places
- ❑ Green space
- ❑ Legacy and stewardship
- ❑ Future proofed - resilient



Didcot Garden Town

Didcot Garden Town commitment: 15,000 new homes and 20,000 new jobs within Didcot Garden Town (DGT) which includes the Areas of Influence (AOI) by 2031.



Housing

Tremendous progress with 10,000 homes approved or under construction along with facilities to support them.



Jobs

Current estimate is 38,533 jobs in DGT, with statistics indicating that DGT is on track to reach its committed target.



17,000 new jobs alone are secured through the growing opportunities at Milton Park, Harwell Campus and Culham Science Centre.

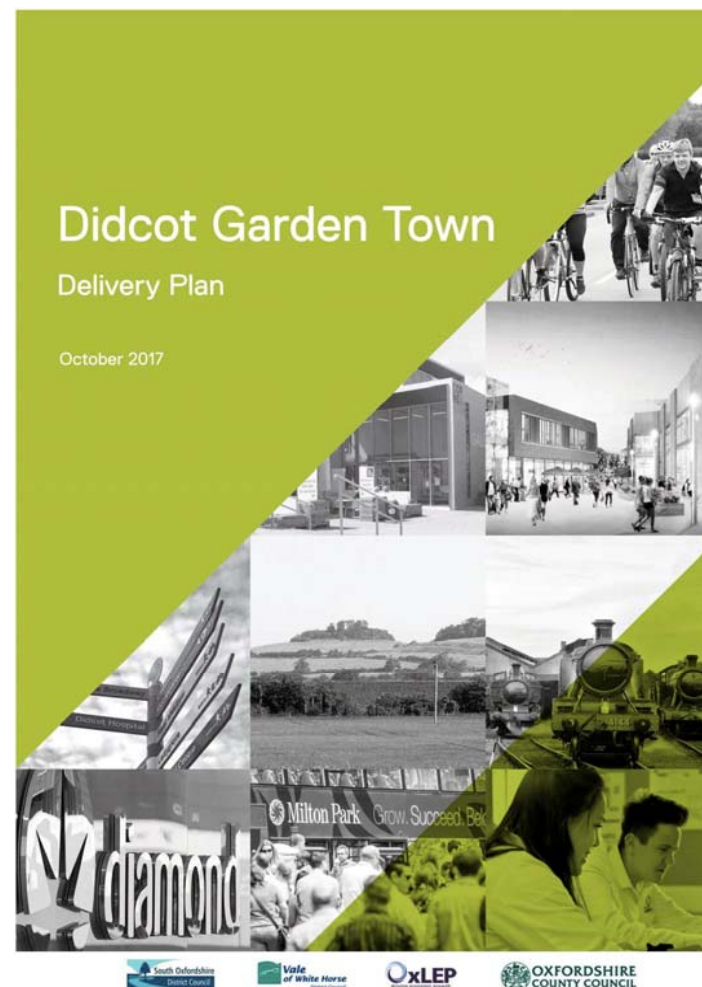
Investment by businesses is substantial, with an estimated figure in excess of £2b being leveraged into DGT since 2015.

Didcot Garden Town

Delivery Plan

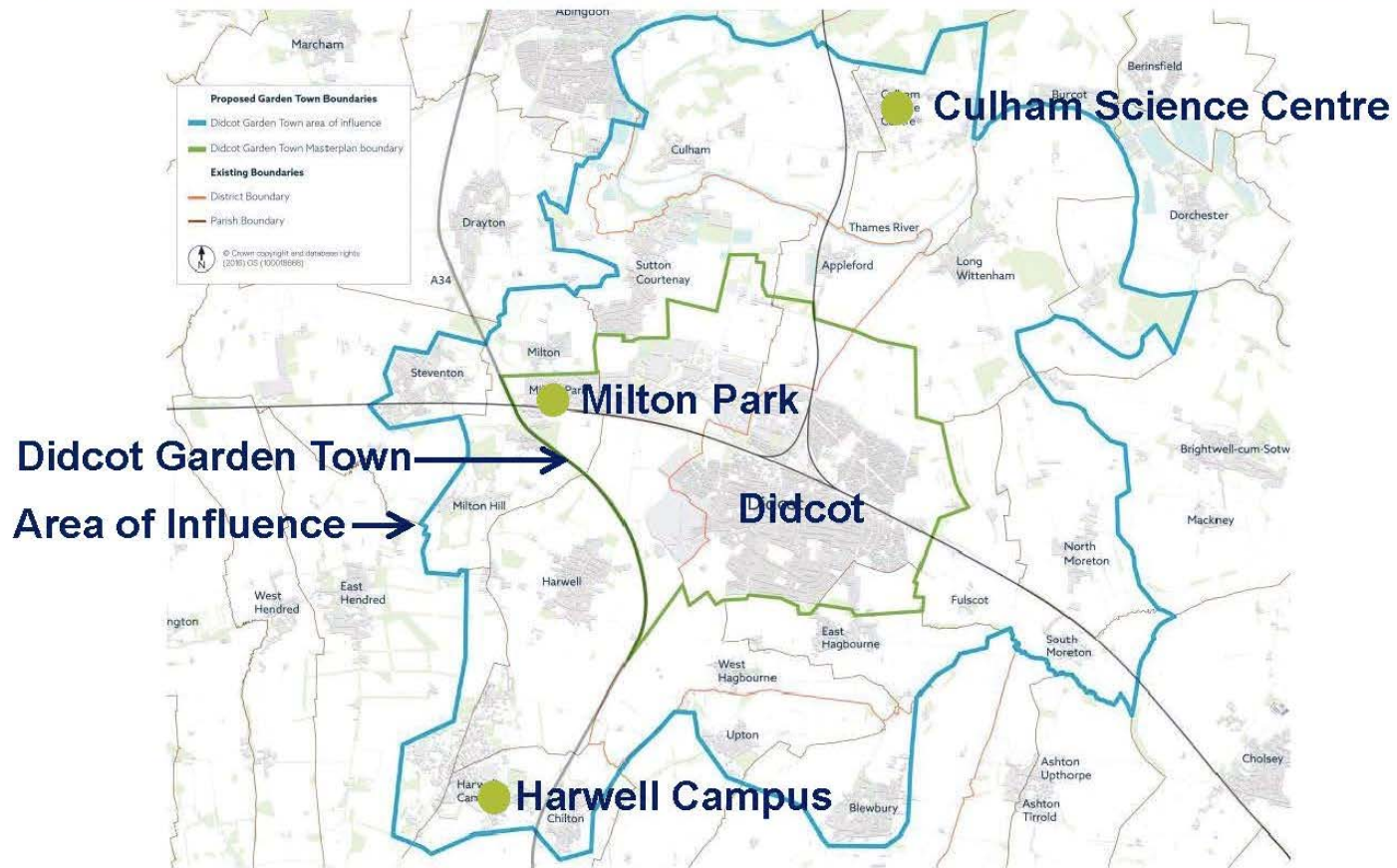
- Approved October 2017
- South and Vale
- Vision for growth
- To 2031
- Smart, green, connected
- Includes Science Vale

www.southoxon.gov.uk/didcotgardentown



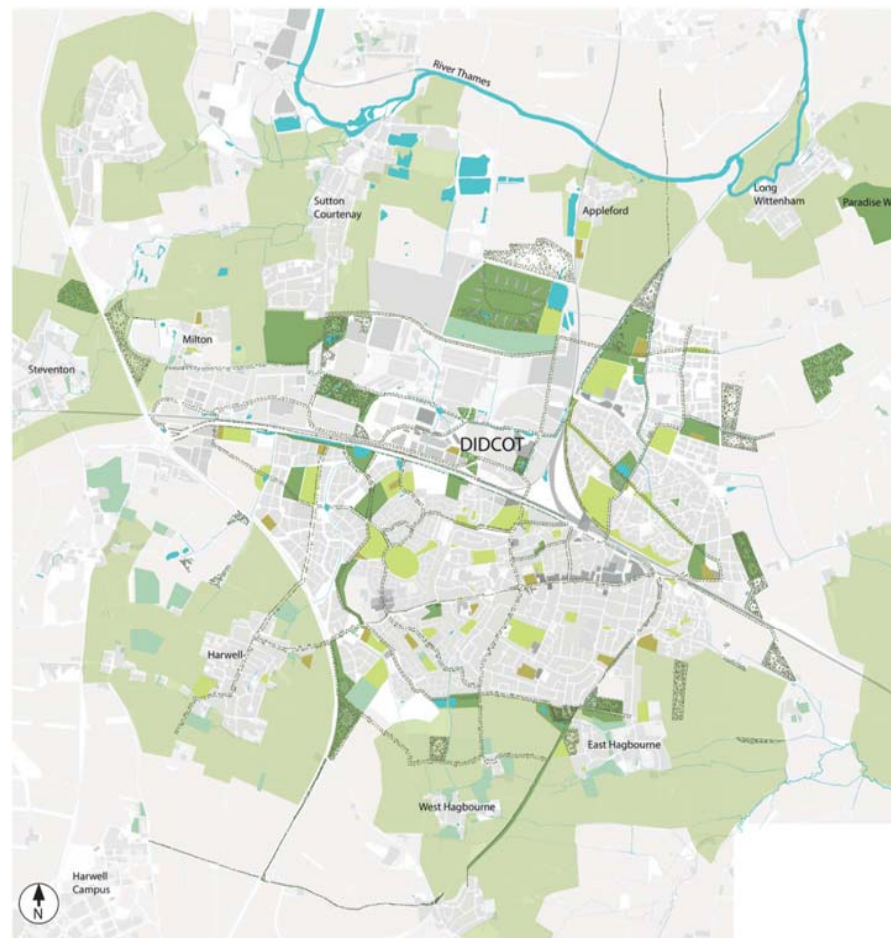
Didcot Garden Town

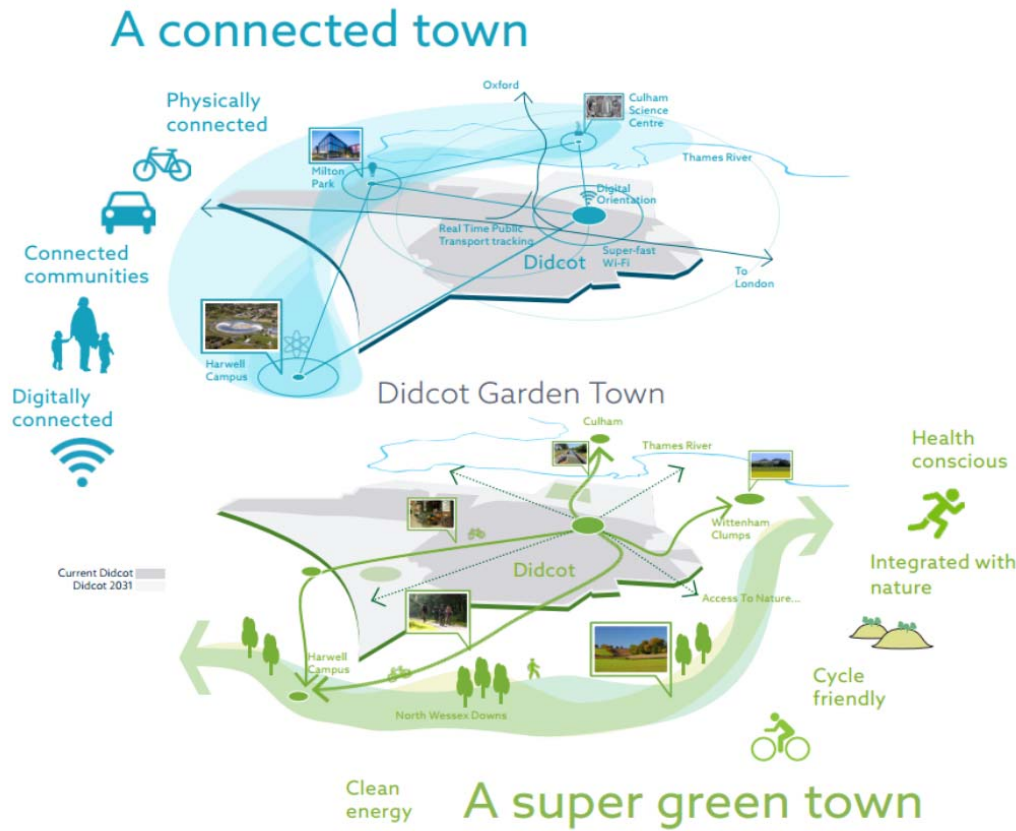
Delivery Plan



Master Plan Principles

- Connected movements
- Smart: new technology
- Community support
- Network of open spaces
- Enhanced town centre
- Range of housing
- Embedded sustainability





Projects

- 64 projects identified
- > £600 million to implement
- Projects delivered by public and private leads
- 6 main themes
 - Community
 - Transport
 - Sustainability
 - Business
 - Housing
 - Public realm design



Garden Line

A first phase of works to initiate the Garden Line route to improve existing cycling infrastructure to connect Didcot with Harwell and Culham. The first phase would be upgrading the route between Didcot and Harwell, future proofing it in line with the masterplan proposals (Section 9.4).



Community hub

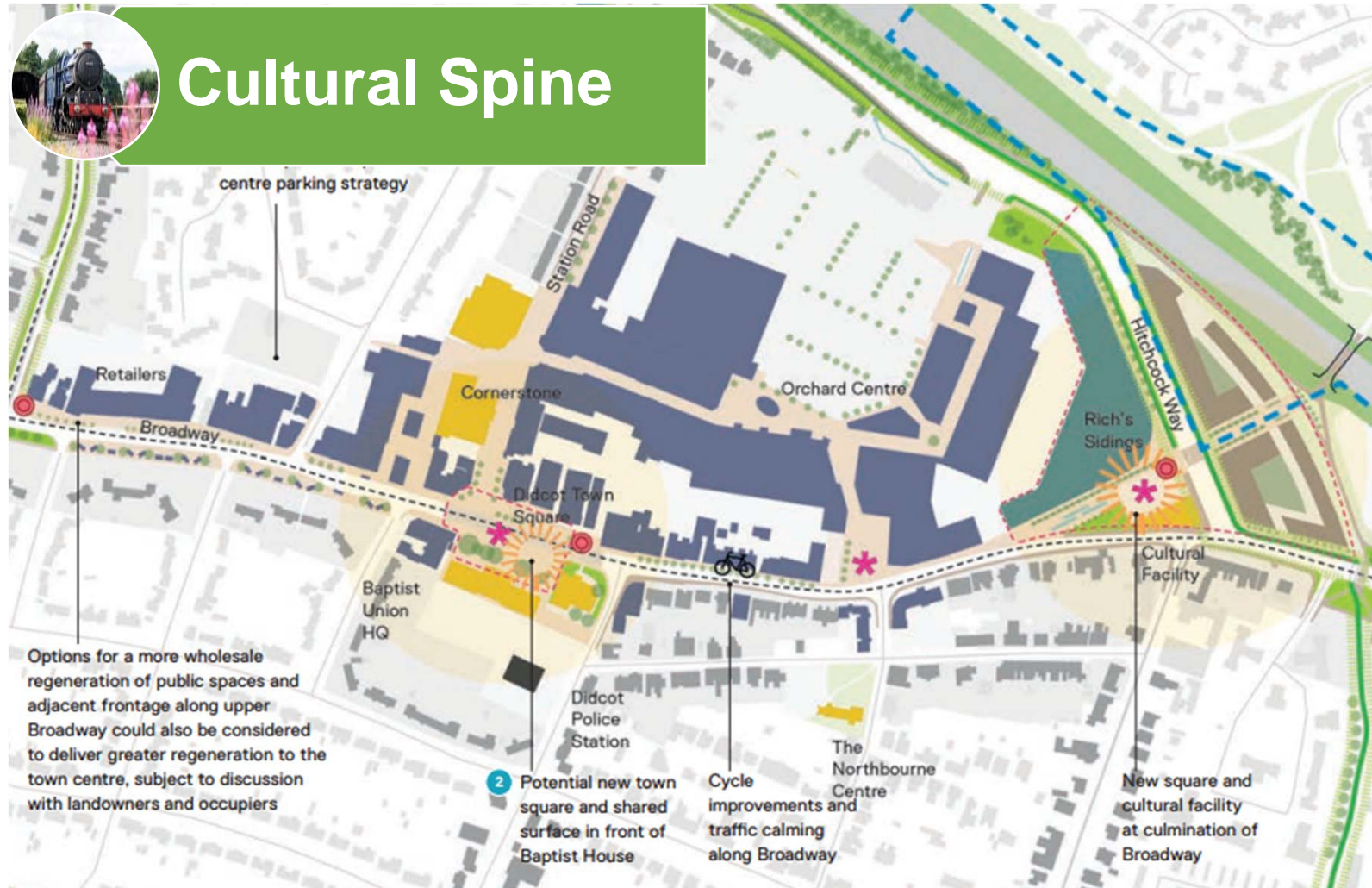
A community garden and 'grow cook eat' facility for everyone in the town, located at an unused site adjoining the Co-op in Ladygrove. Developing community interest in local food growing is key to health, wellbeing and community and environmental sustainability. A suite of initiatives to engage with existing allotment societies and Sustainable Didcot to promote local food production should be organised. Set up pop-up shop for produce sale also stalls within Saturday farmers' market to boost local interest. Identify potential sites within villages to be included in neighbourhood plans for more commercial market gardening by local landowners and farmers. Research potential for involvement of bio-science and landowner groups.



Connectivity hub

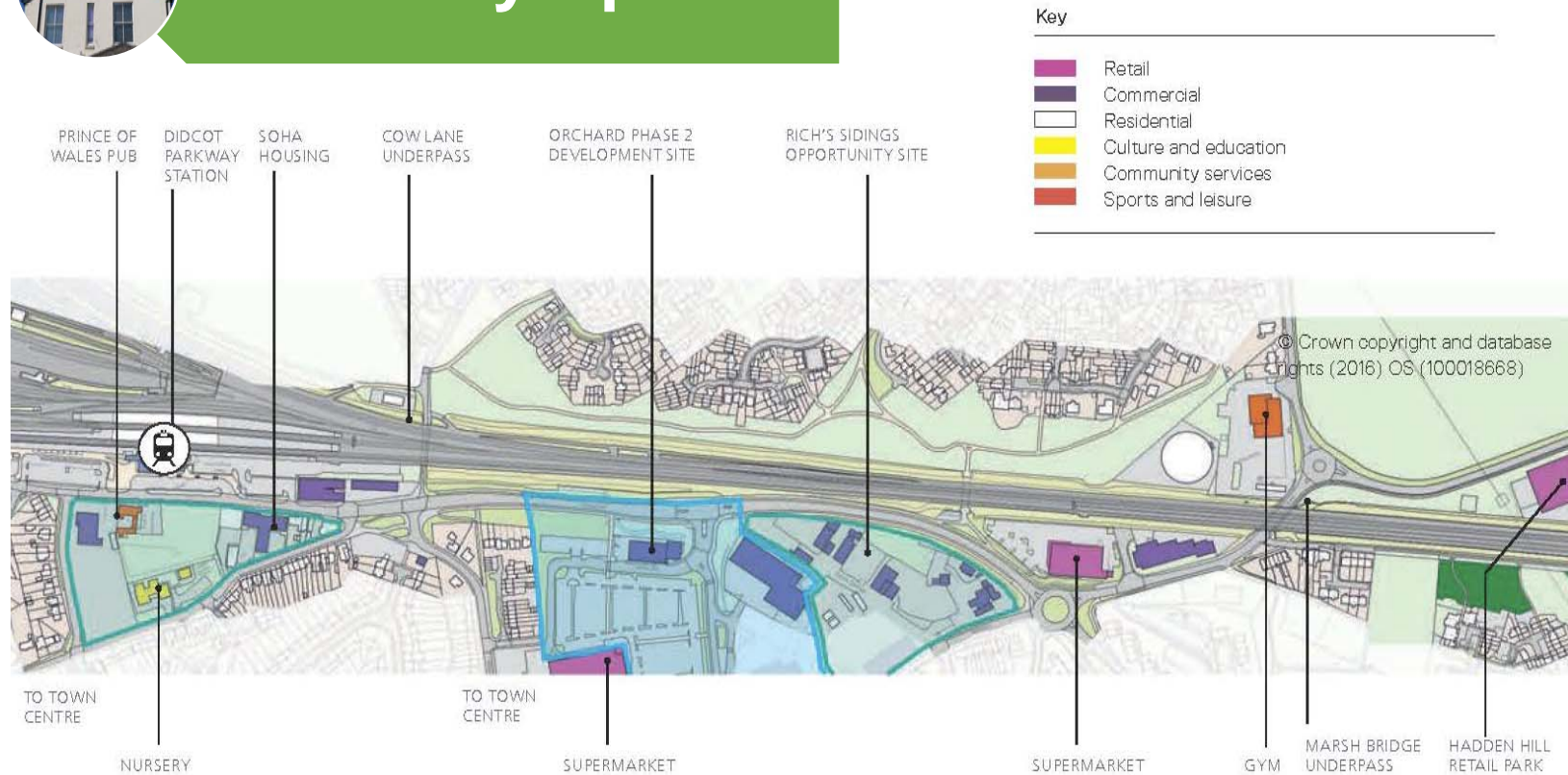


Cultural Spine





Gateway Spine



Didcot Garden Town

Delivery Plan

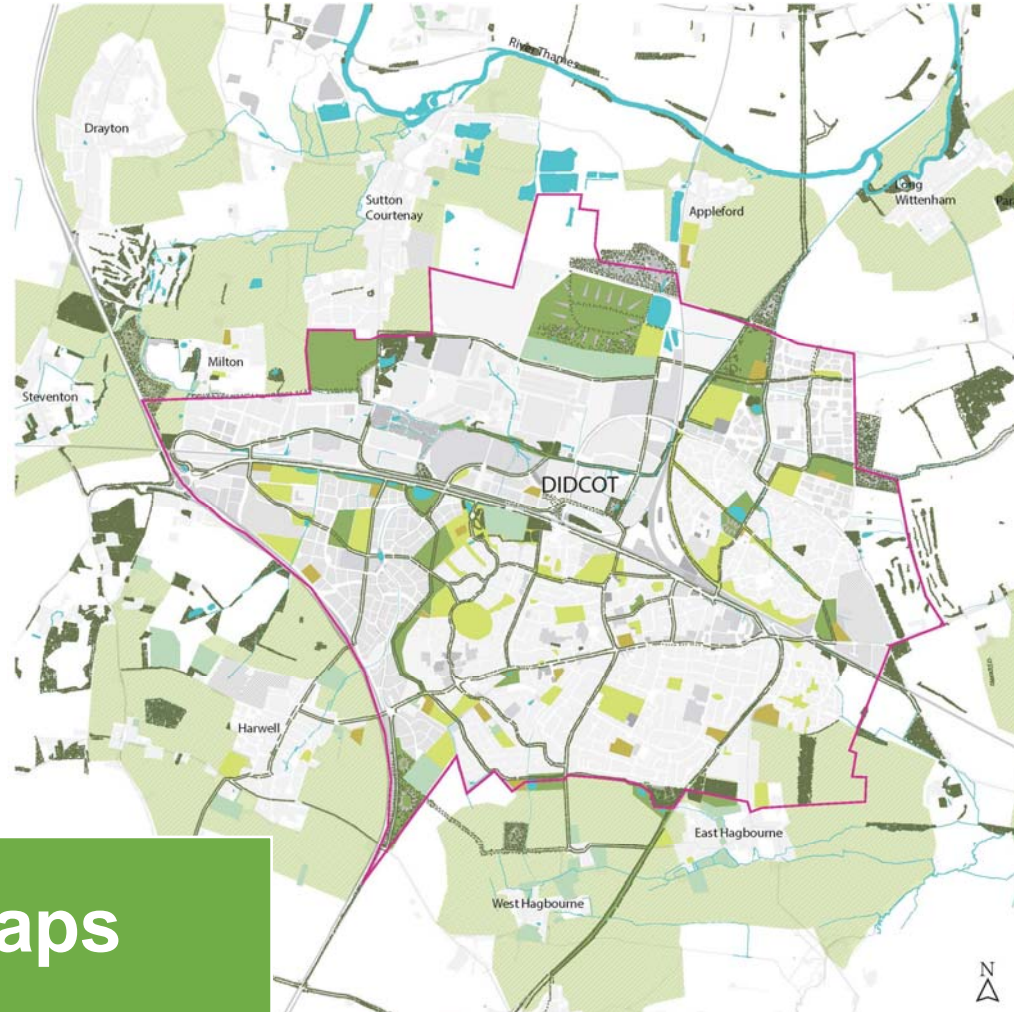


Garden Line

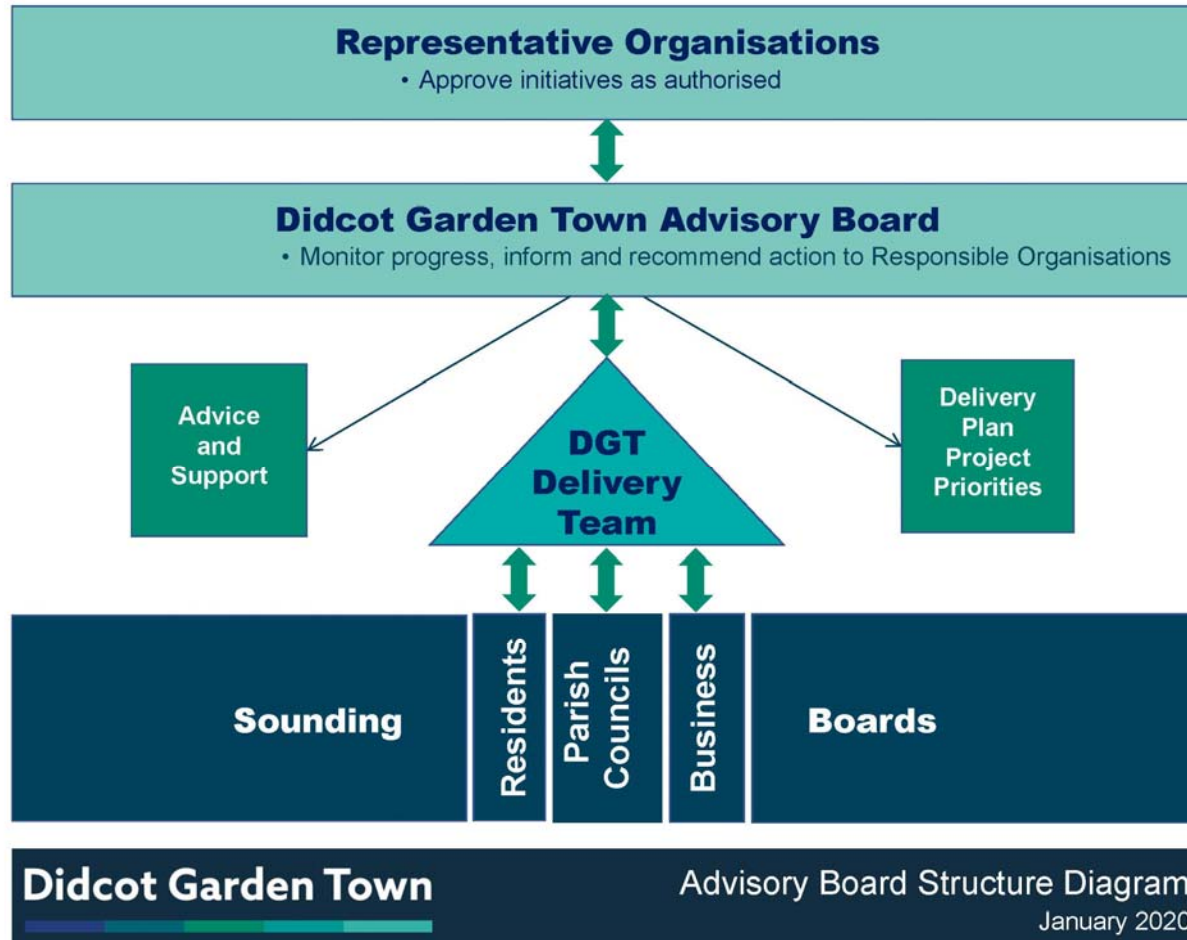
Didcot Garden Town

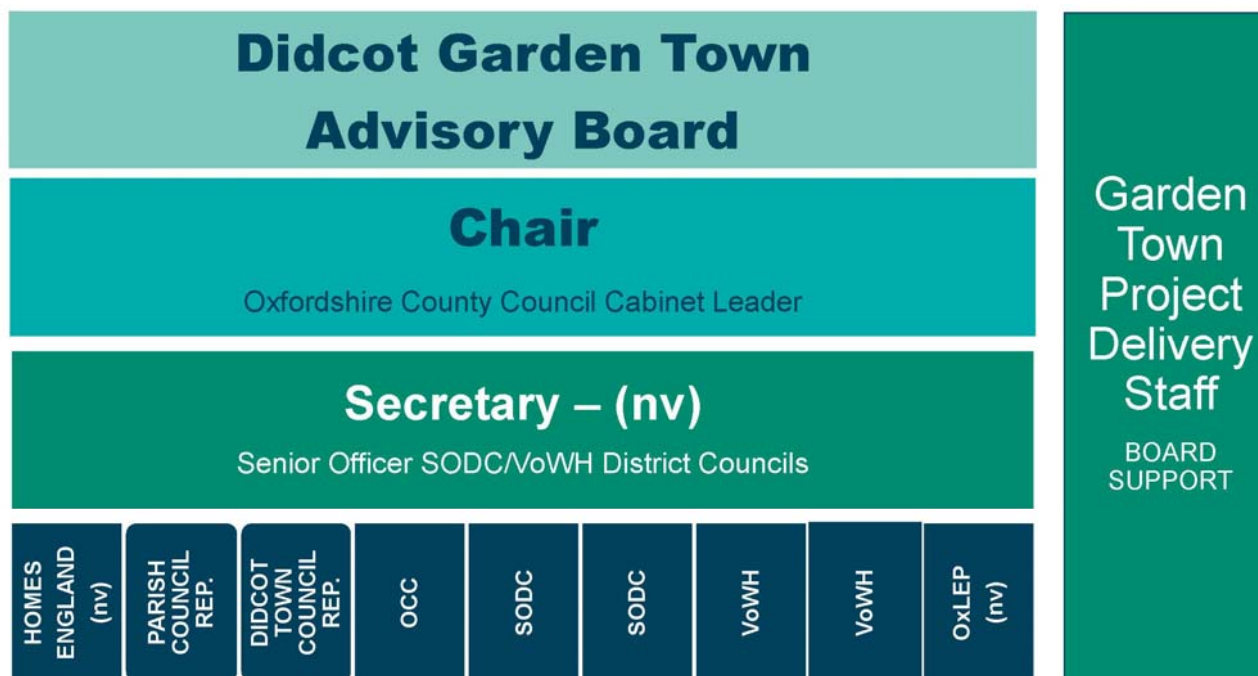
Delivery Plan

- Key**
- Didcot Garden Town master plan boundary
 - Park, formal garden, play, amenity and cemetery
 - Publicly accessible natural green space
 - Allotments, community garden, and city farm
 - Proposed green buffer around necklace of villages
 - Orchard
 - Water/ wetland
 - Woodland
 - Landform
 - Green corridor
 - Didcot Station



Green Gaps





DIDCOT – Didcot Town Council
OCC – Oxfordshire County Council
OxLEP – Oxfordshire Local Enterprise Partnership
SODC/VoWH – South Oxfordshire and Vale of White Horse District Councils
nv – non voting

Didcot Garden Town Advisory Board Structure Diagram
January 2020

Advisory Board Members

- Ian Hudspeth, Oxfordshire County Council, Chair
- **Rita Atkinson, Sutton Courtenay Parish Council**
- Sue Cooper, Leader of South Oxfordshire District Council
- Mocky Khan, Didcot Town Council
- Judy Roberts, Vale of White Horse District Council
- David Rouane, South Oxfordshire District Council
- Emily Smith, Leader of Vale of White Horse District Council
- Nigel Tipple, OxLEP (Local Enterprise Partnership)
- Catherine Turner, Homes England



Team Structure



Governance



Engagement



Projects

Didcot Garden Town

info@didcotgardentown.co.uk

01235 422473

Your chance to get involved with Didcot Garden Town!

<https://survey.southandvale.gov.uk/s/registerDGT/>



It is an exciting time for the Didcot Garden Town project as it comes off the delivery plan pages into real life community projects!

The Garden Town Team are using the information from the Didcot Garden Town Delivery Plan that was adopted in 2017. The plan sets out how the vision for the town will grow in an effective way. They are working on how to deliver the projects that the community has identified as the most important. These projects help plan for the expected new growth of just over 15,000 new homes and 20,000 new jobs coming in the town and surrounding areas.

The status has helped Didcot to receive significant investment from the government to help deliver growth in all areas - not just new homes and jobs.

Garden town status emphasises the importance of keeping areas of unique green space for everyone living in area. A garden town can attract new sustainable and smart technology that helps to reduce the impact on the environment and funding to help to improve connections between the town and local villages and the surrounding countryside.

Whether you are a resident, business, community organisation or parish council we want to keep in touch with you! To keep up to date with projects, events and key milestones, please sign up to receive notifications from the Garden Town Team.



Didcot Garden Town

Current Work: Engagement



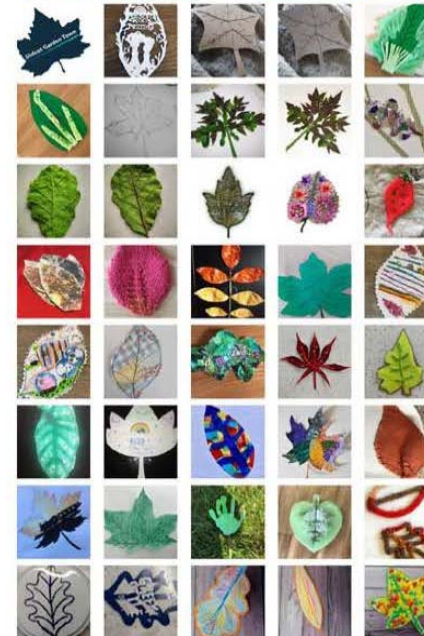
Welcome to our special edition newsletter on the Gateway Spine.

Didcot Gateway Proposals

Homes England are inviting feedback on their new proposal to create a high-quality residential-led development at Didcot Gateway, located opposite Didcot Parkway train station.

The Didcot Gateway proposal includes up to 265 new homes and opportunities for new offices, a café and some retail space. The development will create a high-quality new gateway into Didcot, providing a mix of one to three bedroom homes, opportunities for commercial uses, new open spaces and improved connectivity from the railway station to the town centre.

The emerging proposal is being shared with the local community, by Homes England, and they would like your feedback on what is proposed. You can view and comment on the proposals until 29 July 2020.



Cycling

- SVCN
- Cycle parking at Didcot Parkway
- LCWIP



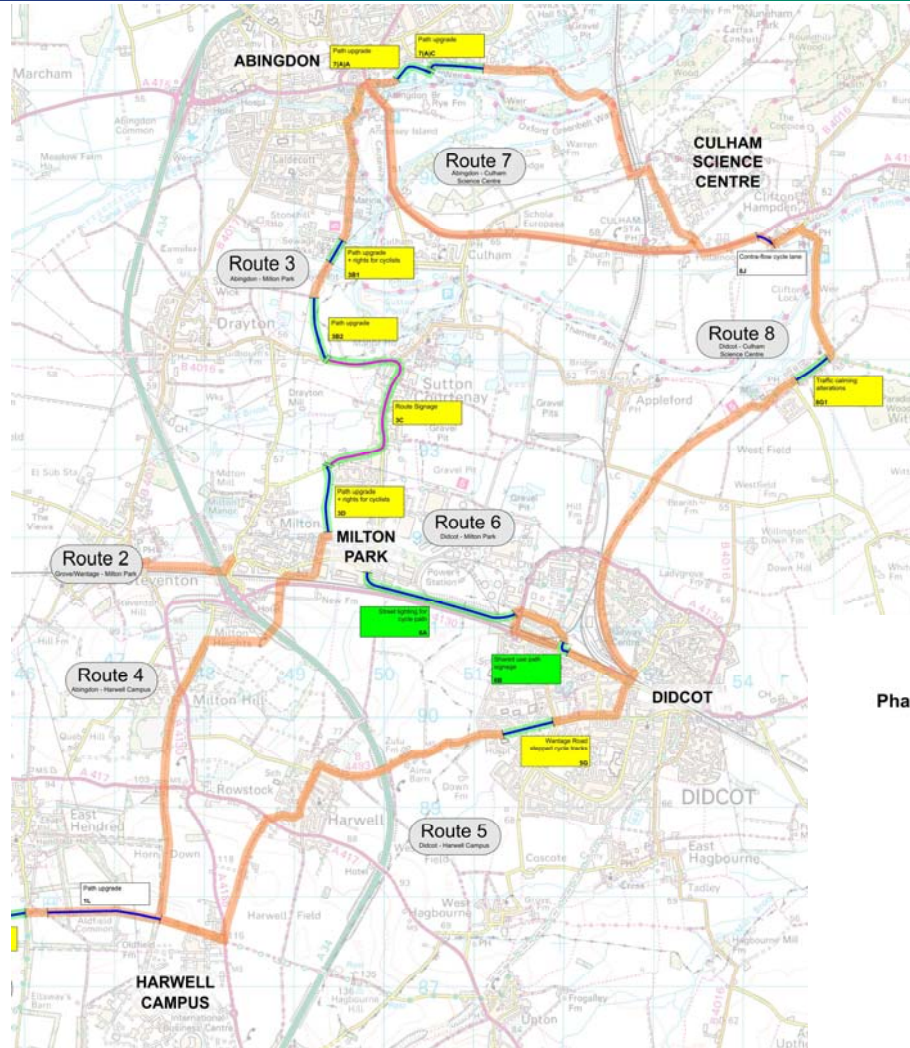
Didcot Garden Town

Current Work: Transport

Science Vale Cycle Network (SVCN) Strategic Route Map - Jun 2020

- Proposed SVCN Strategic Routes —
- Proposed SVCN Phase 1 Delivery 2020 —
- Extent of Construction Activities —
- Extent of Signage Only —

Cycling:
SVCN



Status of
Phase 1 programme
- Jun 2020

Scheme for
delivery

Reserve
scheme

Delivered



Existing
Cycle
Parking

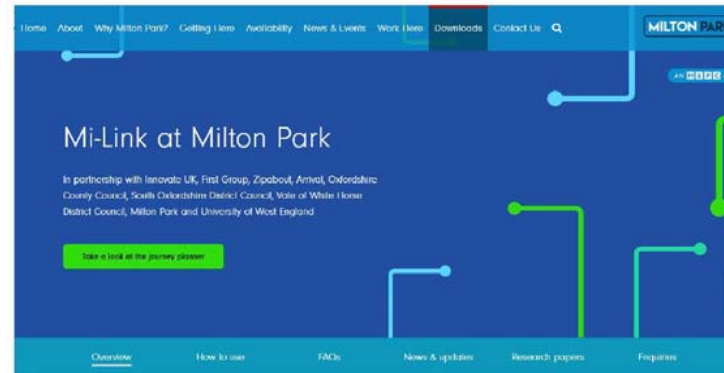
DIDCOT PARKWAY – RAIL STATION 600 CYCLE PARK FACILITY



PARTNERS

- FirstBus
- Arrival
- Zipabout
- Oxfordshire County Council
- University of the West of England

- Milton Park
- South Oxfordshire District Council
- Vale White Horse District Council
- Nova Modus



Mi-Link is live now and was developed as part of the MultiCAV project

MultiCAV Buses



Didcot Garden Town

Current Work: Transport

- A4130 linked to B4016
- Diverts traffic from centre
- In preliminary design
- Funding is largely in place
- Timing with HIF

**Transport:
Northern
Perimeter
Road**



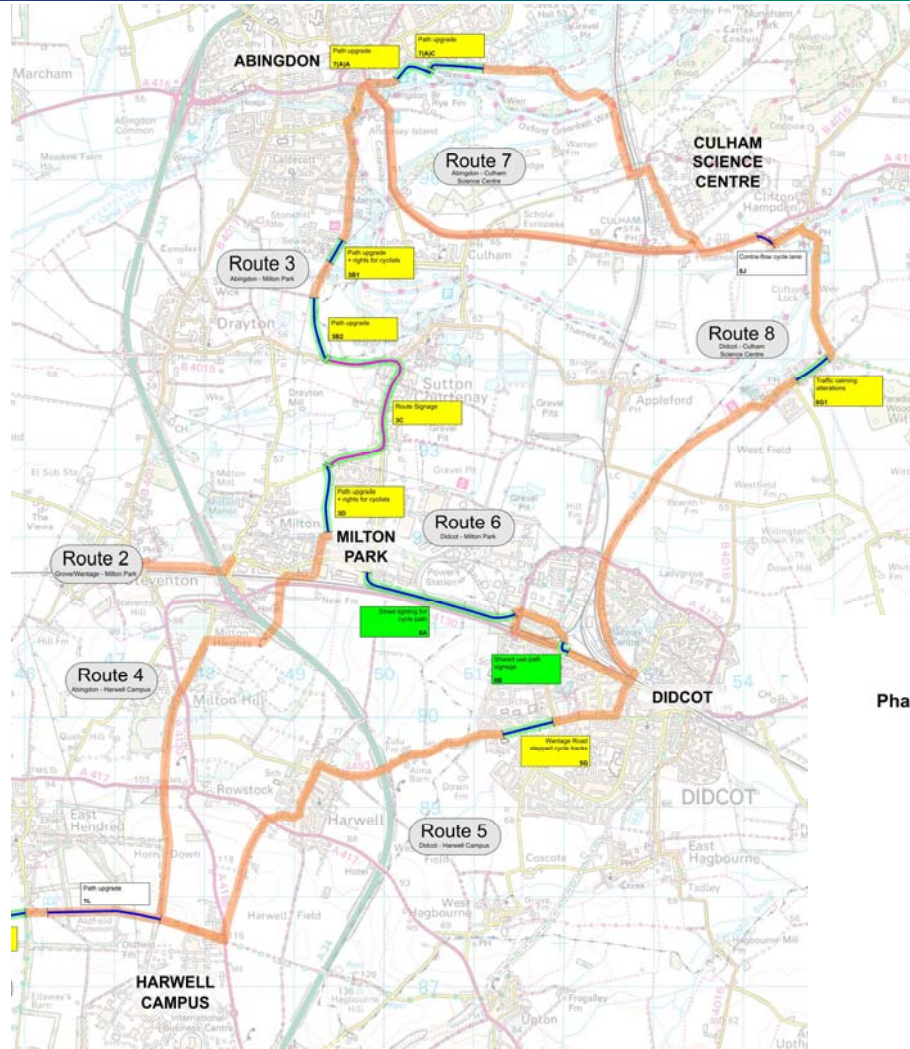
Didcot Garden Town

Current Work: Cycling

Science Vale Cycle Network (SVCN) Strategic Route Map - Jun 2020

- Proposed SVCN Strategic Routes —
- Proposed SVCN Phase 1 Delivery 2020 —
- Extent of Construction Activities —
- Extent of Signage Only —

Cycling:
SVCN



Status of
Phase 1 programme
- Jun 2020

Scheme for
delivery

Reserve
scheme

Delivered



Gateway Project

300 homes by Homes England



Valley Park

4254 homes by Taylor Wimpey and Persimmon Homes



Ladygrove East

642 homes by Bloor Homes



NE Didcot

2030 homes



Engagement

- Sounding Boards
- Newsletter
- Active Communities



Innovation

- Engagement through arts
- MutliCAV and MiLink
- Meanwhile Uses



Housing and Transport

- Design review
- HIF design consultation
- Civil parking enforcement



Didcot Garden Town

Questions?

didcotgardentown@southandvale.gov.uk

01235 422473

- Marybeth Harasz, Garden Communities Manager
- Nicky Wyer, DGT Project Officer