

# EAST HAGBOURNE NEIGHBOURHOOD DEVELOPMENT PLAN REFERENDUM

Thursday 14 March 2019

**INFORMATION STATEMENT**

**&**

**INFORMATION FOR VOTERS**

A Referendum relating to the adoption of the East Hagbourne Neighbourhood Development Plan will be held for the East Hagbourne Neighbourhood Area on Thursday 14 March 2019.

This information sheet explains more about the Referendum that will be taking place.

**The question asked at the Referendum will be:**

***Do you want South Oxfordshire District Council to use the Neighbourhood Plan for East Hagbourne to help it decide planning applications in the neighbourhood area?***

You vote by putting a cross (X) in the 'Yes' or 'No' box on the ballot paper.

If more people vote 'yes' than 'no' in the Referendum, then South Oxfordshire District Council will use the East Hagbourne Neighbourhood Development Plan to help it to decide planning applications within East Hagbourne.

The Neighbourhood Plan, once adopted, will then become part of the Development Plan used by the Local Planning Authority (South Oxfordshire District Council).

If more people vote 'no' than 'yes' in this Referendum or there is a tied vote, then planning applications will continue to be decided without reference to the Neighbourhood Development Plan as part of the Development Plan for the local area.

The Referendum will be conducted in accordance with procedures similar to those used at local government elections.

### **What is Neighbourhood Planning?**

Neighbourhood planning was introduced under the Localism Act 2011 to give local communities more control in the planning of their neighbourhoods. It introduced new rights and powers to allow local communities to shape new development in their local area. It enables communities to develop a shared vision for their neighbourhood and deliver the sustainable development they need through planning policies relating to the development and use of land.

### **What is a neighbourhood area?**

A neighbourhood area can cover single streets or large urban or rural areas. The boundaries of a neighbourhood area are put forward by:

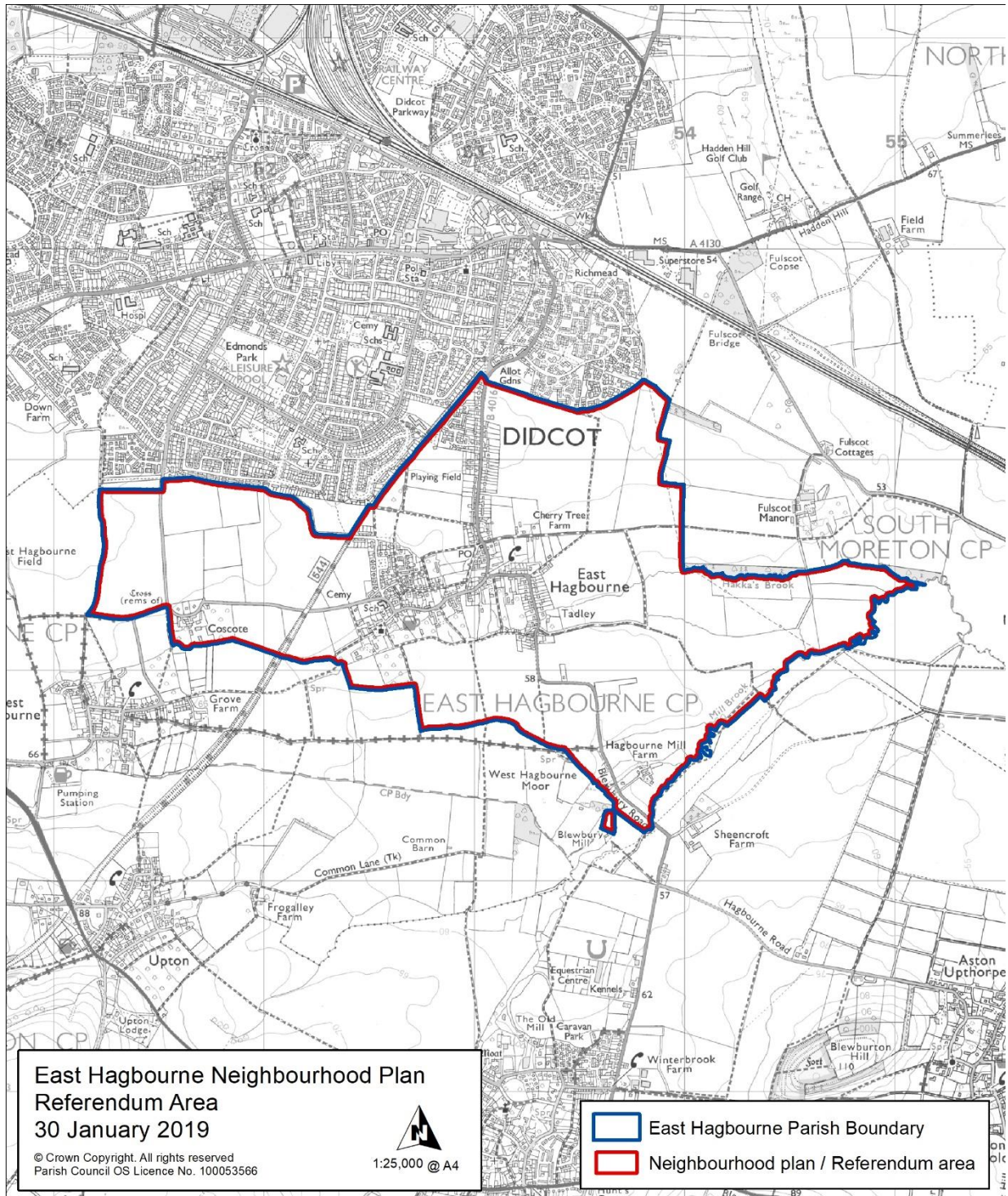
- Town or parish councils
- A neighbourhood forum a group of at least 21 people (in areas without a town or parish council)

### **What is a Development Plan?**

In England, planning applications are determined by local planning authorities in accordance with the development plan. A development plan is a set of documents that set out the policies for the development and use of land across the entire local authority area.

## East Hagbourne Neighbourhood Area

The Referendum area is identified on the map below. This has been designated as the East Hagbourne Neighbourhood Plan area.



## Referendum campaign costs

An individual or body can incur costs during the period of the Referendum for the purposes of campaigning in association with the Referendum.

The Referendum expenses limit that will apply to the East Hagbourne Neighbourhood Development plan is £2416.93. The number of people entitled to vote in the Referendum by reference to which this limit has been calculated is 931.

### Specified documents

The following specified documents can be inspected on the Council's website at [www.southoxon.gov.uk/easthagbourne](http://www.southoxon.gov.uk/easthagbourne) and at the following addresses and times:

Reception South Oxfordshire District Council 135 Eastern Avenue, Milton Park, Milton, OX14 4SB	Mon to Thurs 8.30am to 5.00pm and Fridays 8.30am to 4.30pm
<b>St Andrew's Church, Church Cl, East Hagbourne, Didcot, OX11 9ND</b>	

### The specified documents are:

- East Hagbourne Neighbourhood Development Plan (referendum version)
- Summary of the representations submitted to the Independent Examiner
- Statement that the draft plan meets the basic conditions (decision statement)
- Independent Examiner's Report (appendix 2 of decision statement)
- Information Statement and Information for Voters (this document)

### Who can vote?

A person is entitled to vote if at the time of the Referendum, they meet the eligibility criteria to vote in a local election for the area and if they live in the Referendum area. The eligibility criteria are:

- You are registered to vote in local government elections; and
- You are 18 years of age or over on Thursday 14 March 2019

If you are not registered, you won't be able to vote. You can check if you are registered by calling our Helpline on 01235 422528.

If you are not registered to vote, you can go online to [www.gov.uk/register-to-vote](http://www.gov.uk/register-to-vote) with your national insurance number by midnight on Tuesday 26 February 2019. If you do not have access to the internet, please call our helpline on 01235 422528.

### How to vote

There are three ways of voting:

- In person on Thursday 14 March 2019 at your local polling station.
- Receive a poll card confirming your polling station for this Referendum.
- Polling stations are open from 7am to 10pm.

## By post

- If you have a postal vote already, you will receive a poll card confirming this.
- If you want to vote by post, you will need to complete an application form and send it to the Electoral Registration Officer to arrive by 5pm on Wednesday 27 February 2019 at the address below or email to [elections@southandvale.gov.uk](mailto:elections@southandvale.gov.uk).
- Postal votes can be sent overseas but think about whether you will have time to receive and return your completed postal vote by Thursday 14 March 2019.
- You should receive your postal vote approximately 10 days before polling day. If it doesn't arrive in time, you can ask for a replacement up to 5pm on Thursday 14 March 2019 by contacting our helpline 01235 422528.
- Postal vote application forms are available from [www.southoxon.gov.uk/services-and-advice/local-democracy/elections/voting-post](http://www.southoxon.gov.uk/services-and-advice/local-democracy/elections/voting-post) or you can call our helpline on 01235 422528 or email [elections@southandvale.gov.uk](mailto:elections@southandvale.gov.uk) to request one.

## By proxy

- If you can't get to the polling station and don't wish to vote by post, you may be able to vote by proxy. This means allowing somebody that you trust to vote on your behalf.
- If you have a proxy vote already, you will receive a poll card confirming this.
- If you want to vote by proxy, you will need to complete an application form and send it to the address below to arrive by 5pm on Wednesday 06 March 2019 at the address below or email to [elections@southandvale.gov.uk](mailto:elections@southandvale.gov.uk)
- Proxy vote application forms are available from [www.southoxon.gov.uk/services-and-advice/local-democracy/elections/voting-proxy](http://www.southoxon.gov.uk/services-and-advice/local-democracy/elections/voting-proxy) or you can call our helpline on 01235 422528 or email [elections@southandvale.gov.uk](mailto:elections@southandvale.gov.uk) to request one.

## How to find out more

- Further general information on neighbourhood planning is available at [www.southoxon.gov.uk/neighbourhoodplans](http://www.southoxon.gov.uk/neighbourhoodplans).
- For queries about planning issues and neighbourhood planning in general, please contact [planning.policy@southoxon.gov.uk](mailto:planning.policy@southoxon.gov.uk).
- You can find specific documents for the East Hagbourne Neighbourhood Development Plan at: [www.southoxon.gov.uk/easthagbourne](http://www.southoxon.gov.uk/easthagbourne).
- For more information about voting and the arrangements for this Referendum, please contact our Helpline on 01235 422528 or email [elections@southandvale.gov.uk](mailto:elections@southandvale.gov.uk)

Published on: Thursday 31 January 2019

Electoral Services

South Oxfordshire District Council

135 Eastern Avenue, Milton Park, Milton, OX14 4SB