

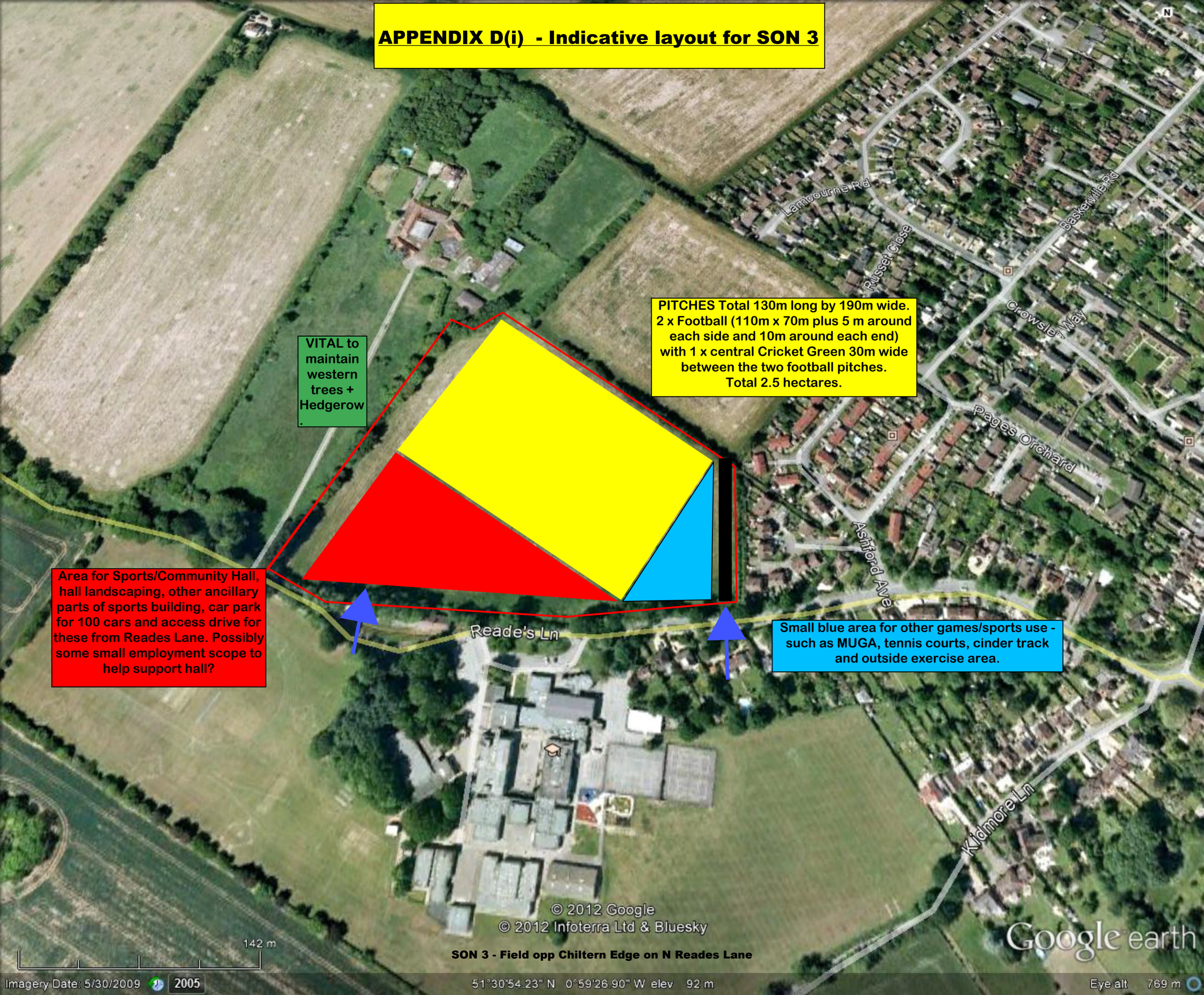
APPENDIX D(i) - Indicative layout for SON 3

VITAL to maintain western trees + Hedgerow

PITCHES Total 130m long by 190m wide. 2 x Football (110m x 70m plus 5 m around each side and 10m around each end) with 1 x central Cricket Green 30m wide between the two football pitches. Total 2.5 hectares.

Area for Sports/Community Hall, hall landscaping, other ancillary parts of sports building, car park for 100 cars and access drive for these from Reades Lane. Possibly some small employment scope to help support hall?

Small blue area for other games/sports use - such as MUGA, tennis courts, cinder track and outside exercise area.



© 2012 Google
© 2012 Infoterra Ltd & Bluesky

SON 3 - Field opp Chiltern Edge on N Reades Lane

142 m